

Place
Stamp
Here

Mail today to—

Aqua Vac Systems, Inc.
1711 Longwood Road
West Palm Beach, Florida 33409
Attn: Warranty Records

FOLD and MAIL or FAX to 561-688-0217 or register on the web at www.aquavacsystems.com

Serial # _____ KingShark
(Located on Bottom of Base and Shipping Carton)

REGISTRATION OF GUARANTEE

This registration card must be mailed within 10 days of purchase to secure limited warranty.
FOR USE IN THE U.S.A. ONLY.

Name _____

Address _____

City _____ State _____ Zip _____

Date Purchased _____

Price Paid _____

How many pools do you have?: _____

How many Aqua Vac units do you have?: _____

Purchased from: _____

City _____ State _____ Zip _____

The size of my pool is _____

Have you seen us on the internet? Yes _____ No _____

KingShark



OWNER'S MANUAL



KingShark

LIMITED WARRANTY

Your KingShark, which has been manufactured, tested and inspected in accordance with carefully specified engineering requirements, is warranted to be free from defects in material and workmanship.

DURATION OF WARRANTY AND TO WHOM EXTENDED (USA only)

One Year ALL GENERAL PARTS (EXCLUDING filters).

One Year POWER TRAIN WARRANTY (Motor, Cord and Gear Box).

This limited warranty includes both parts and labor for the periods above noted. This warranty is available to such first consumer purchaser.

EXCEPTIONS AND EXCLUSIONS FROM WARRANTY

The KingShark is required to be used on electric current as indicated on the nameplate. Otherwise damage, defects, malfunctions, or other failures of the KingShark arising from use on electric current not as indicated are excepted and excluded from this warranty.

Defects, malfunctions, failure, or damage of the KingShark caused by improper, unreasonable, or negligent use or abuse while in the possession of the consumer are likewise excluded from this warranty.

If repair is done on your KingShark by anyone other than those designated as authorized to perform such work without first having obtained factory instructions, Aqua Vac Systems, Inc., at its sole option, may determine that this warranty will not apply and that reimbursement for such repair will not be made because of the failure to comply with such factory specified instructions.

Any unit sold outside the continental U.S.

PROCEDURE TO BE TAKEN TO OBTAIN PERFORMANCE OF WARRANTY REPAIR

To secure repair of the KingShark or any warranted parts under this warranty, the following procedure should be used. After making prior arrangements with the facility involved, the inoperable KingShark or warranted parts, together with two extra photocopies of satisfactory evidence of the purchase date, must be delivered, with shipping and delivery charges prepaid, to the following:

Nearest Aqua Vac Systems Factory Authorized Service Center. If you are unable to locate the foregoing, you may call, write, or otherwise communicate with Aqua Vac Systems, Inc., telephone 1-800-327-0141 for the nearest location.

Upon compliance with the above procedure, and if claim is made within 90 days from date of purchase, defective warranted parts will be replaced at no charge and the machine sent back to you prepaid.

If, however, claim is made more than 90 days but less than one year from date of purchase, defective warranted parts will be replaced at no charge and the unit will be sent back to you freight collect.

Filter cartridges not covered by this warranty will be replaced only with your prior approval of the charges thereof.

If beyond the warranty period of one year, repairs will be made only with your prior approval of the charges and the unit will be sent back to you freight collect.

In following the procedures above set forth, PLEASE MAKE CERTAIN to state the KingShark serial number as shown on the base plate of the KingShark.

REPLACEMENT

In the event of a defect, malfunction, or failure of your KingShark, or any warranted part to conform with this warranty, Aqua Vac Systems, Inc. may at its sole option and own expense, replace the KingShark or any warranted part with another new or factory rebuilt identical or reasonably equivalent unit or part in lieu of repairing the defect.

WARRANTY REGISTRATION CARD FOR YOUR PRINCE AND REQUESTS FOR INFORMATION

Please fill out the warranty registration card accompanying your KingShark, giving complete information as requested on the card, and return to the factory.

Any information or questions you may have concerning your KingShark or this warranty may likewise be secured from the factory.

No dealer, distributor, or other similar person has any authority to make any warranties or representations concerning Aqua Vac Systems, Inc.'s products or to extend this warranty beyond the express items contained herein. Accordingly, Aqua Vac Systems, Inc. assumes no responsibility for any such warranties or representations beyond the express items contained in this limited warranty. This limited warranty is valid and enforceable only in the United States of America on KingSharks owned and normally operated in the United States of America. This warranty gives you specific legal rights, and you may also have other rights which vary from state to state.



1711 Longwood Road • West Palm Beach, FL 33409
(561) 688-0211 • (800) 327-0141 Nationwide • FAX (561) 688-0217
www.aquavacsystems.com • E-mail: info@aquavacsystems.com

KingShark

CONTENTS

Safety Precautions	2
General Information.....	3
Motor Information	4
Trouble Shooting	5
Specifications	7
Machine Assembly/Parts	8
Filter Assembly/Parts.....	10
Accessories	11
Preventive Maintenance.....	13
Parts Ordering Instructions.....	14

KingShark

SAFETY PRECAUTIONS

The KingShark automatic swimming pool vacuum cleaner has been manufactured with the highest degree of care and concern for safety. We suggest the following safety precautions become part of your pool safety regulations:

1. ALWAYS PUT THE MACHINE INTO THE WATER BEFORE TURNING ON THE POWER SUPPLY.
2. IT IS IMPORTANT FOR SWIMMER'S SAFETY TO REMOVE THE UNIT IMMEDIATELY FOLLOWING USE. THIS WILL ALSO IMPROVE THE OPERATING LIFE OF YOUR KINGSHARK.
3. BE CERTAIN THE POWER SUPPLY IS ONLY PLUGGED INTO A GROUNDED ELECTRICAL OUTLET EQUIPPED WITH A GROUND FAULT CIRCUIT INTERRUPTER.
4. DO NOT HANDLE MACHINE WHILE IT IS PLUGGED INTO THE POWER SUPPLY, AND POWER SUPPLY IS ON.
5. DO NOT USE AN EXTENSION CORD. THIS COULD CREATE A SAFETY HAZARD AND/OR DAMAGE YOUR UNIT.
6. ALWAYS STAY OUT OF THE POOL WHILE CLEANER IS IN OPERATION.
7. NEVER ALLOW PLUG TO ENTER THE POOL.
8. DO NOT OPERATE THE MACHINE OUT OF WATER. THIS WILL DAMAGE THE MOTOR SEAL AND VOID THE WARRANTY.
9. DO NOT DRAG THE MACHINE OUT OF THE POOL AGAINST THE SIDE WALL. THIS COULD DAMAGE UNIT AND/OR YOUR POOL WALL.
10. SOME POOLS HAVE A CORNER OR A CORNER STEP CONFIGURATION THAT MAY CAUSE THE UNIT TO "HANG-UP"; THEREFORE, DO NOT LEAVE THE UNIT COMPLETELY UNATTENDED FOR MORE THAN 1/2 HOUR. OCCASIONAL OBSERVATION AND ATTENDANCE CAN ALSO REDUCE ANY TENDENCY FOR THE CORD TO TWIST.

While the KingShark has been made to operate as safely as possible, we suggest you exercise reasonable care in the handling of the vacuum and inspect the electrical cord frequently for damage or wear, as with any other electrical appliance. After use, remove the unit and rinse with fresh water and remove any twist that may be present in the cord.

KingShark

GENERAL INFORMATION

You have purchased the finest piece of equipment in the pool cleaner industry. If you treat it as such, your KINGSHARK automatic swimming pool vacuum cleaner will give you years of satisfactory service. As a suggestion, off-season the unit should be stored in the original shipping container for safekeeping.

ADJUSTMENT

THERE IS ONLY ONE ADJUSTMENT THAT MAY BE NECESSARY FOR USE IN MOST POOLS. PLEASE TAKE THE FEW MINUTES TO MAKE IT, IF NECESSARY.

The height of the sensor bar #1710 (Page 9, Key 22) is preset at the factory for average pools. It may be necessary to readjust the height of the sensor bar for the machine to operate satisfactorily in your pool.

In "Free Form" or "Bowl Shaped" pools, the sensor bar will have to be raised to a higher setting to allow the machine to climb out of the deep end and clean up the radius or slope as far as possible without the machine turning over.

Adjustment of the sensor bar #1710 (Page 9, Key 22) is made by loosening adjusting arm nut #1722 (Page 9, Key 26) located just ahead of the intake. The nut is shaped as a thumb screw for your convenience.

With the machine sitting on a level surface, loosen adjusting arm nut, and move sensor bar to desired position. Make certain the sensor bar is parallel to the level surface and retighten the adjusting arm nut one-half to three-quarter turn past hand tight. Do not overtighten.

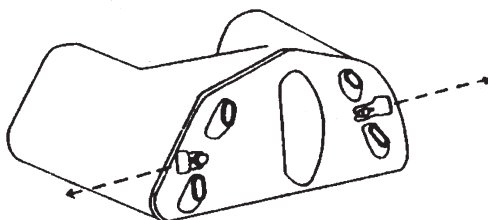
It may be necessary to reset the sensor bar several times to find the best position for operation in your pool. Sensor bar should glide freely. This can be checked by pushing the sensor bar which will activate the reversing arms.

OPERATING INSTRUCTIONS

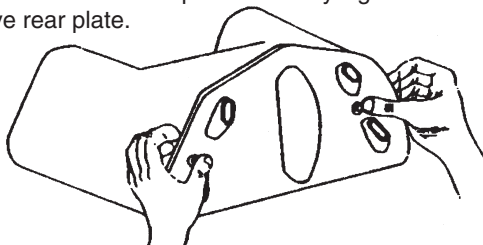
1. Select nearest grounded outlet supply of 110/115/220/240 volts.
CAUTION: avoid overloaded circuits as low or high voltage can damage your motor. A connected ground is most important. Plug cord into outlet. Observe machine as it travels over bottom of pool.
2. Allow machine to travel around the pool until it is clean. Average 30' x 60' pool will require 150 minutes or less. If the pool has a heavy accumulation of debris, it may be necessary to clean the filter several times during the vacuuming period.

KingShark

3. Upon completion of vacuuming the pool, allow the unit to travel to the shallow end of the pool. Before it reaches the pool wall, turn power supply off, raise the unit by the cord, then remove the unit from the water by use of the handle. Allow excess water from the filter to drain into the pool with the KingShark resting on the edge or coping. Do not leave machine in water after turning off.
4. When opening the filter for cleaning, move the machine away from the pool edge so that when filter casing is opened the vacuumed debris will not return to the pool.
5. Cleaning the filter after each use is the most important part of maintaining your KingShark. Clean filters will allow the machine to function most efficiently.
6. Remove the filter by first removing the two push clips as seen below.



Following the removal of the push clips, gently grasp the rear filter plate with the thumbs pressed firmly against the tie rod ends and remove rear plate.



7. Wash the cartridge with a water hose, using a pressure nozzle. Wash outside—then back wash from the inside.
8. Use the KingShark on a regular basis to keep your pool clean.

MOTOR INFORMATION

The motor in your KingShark has automatic overload protection. The overload switch will protect the motor against burning out when an obstruction stops the machine. When an obstruction stops the machine, **UNPLUG THE CORD FROM THE OUTLET** and remove the unit from the pool. Turn the machine over and with the aid of a long screw driver or needle-nose pliers, rotate the impeller and dislodge any foreign object. All large objects should be removed from the pool before the KingShark is put into operation.

KingShark

TROUBLE SHOOTING

Where to set Sensor Bar
(Make adjustments in 1/4" Increments)

Machine turns or hesitates on pool drain:
Raise sensor bar slightly to clear drain.

Machine fails to come out of deep end:
Raise sensor bar to allow machine to climb on incline.

Machine turns away from curved wall too soon:
Raise sensor bar to allow machine to clean higher on curved portion, but still turn away before tipping over.

Machine tips over before tripping or sensing wall:
Lower sensor bar until it trips. However, a slight adjustment might have to be made by clipping one or two coils off the spring #2207L (Page 9, Key 25) that is located directly behind sensor bar slide #1707 (Page 9, Key 21).

Machine turns in circles and twists cord:

1. Sensor bar too high, hitting hood.
2. Thread on reversing arm #1703 (Page 9, Key 64) is worn or stripped, not allowing reversing mechanism to disengage.
3. Sensor bar cable screws are loose.
4. Drive wheel broken.
5. Drive belt broken.
6. Because of various pool designs, especially those with a gradual slope up the sides, the unit has a tendency to attempt to make the climb. To prevent the machine from turning over, a sensor bar weight* can be attached to both sides. This is automatically activated when the machine has reached a maximum point of ascension, reversing the unit. Remember the basic rule: **KEEP THE SENSOR BAR LOW AND LEVEL.**
7. Sensor Bar must always be level to avoid cord twisting!
8. Is the unit being run in the pool for too great a length of time? 150 minutes of operation in a 30' x 60' pool should be sufficient with not more than a few twists in the cord set, which should be straightened out after each vacuuming.

* Must be ordered from factory.

KingShark

TROUBLE SHOOTING CONTINUED

Machine does not pick up:

1. Filter may be clogged and does not permit the flow of water through the filter cartridge.
2. Large object lodged in the intake or in the impeller housing. See motor information, page 4.

Machine does not move:

1. Not connected to live outlet.
2. Object lodged in impeller.
3. A short in the motor; check the ground fault interrupter.
4. Unit runs for short distance but stops. Check for overloaded circuit or possible faulty motor. (Do not use extension cords.)
5. Motor runs but unit becomes motionless (gear box worm is worn or the drive pin is sheared).

Machine tips over backwards before sensing wall:

1. Filter overloaded with sand.
2. Improper sensor bar adjustment (too high).
3. Cord too short for pool length.

KEEP SENSOR BAR LEVEL AT ALL TIMES

KingShark

SPECIFICATIONS

MOTOR:

Type.....	Submersible
Voltage	110/120 230/240 (Export)
Frequency	60 Cycle-50 Cycle (Must Specify)
Speed	1725/1425 RPM
Bearing	Ball Bearing
Housing	Aluminum Anodized
Motor Seals	Double Lip Wave
Overload Protection.....	Thermal Overload
Electrical Cord	#16 Wire Encased in Floatation Jacket; 100' in length

DRIVE:

Reduction	80:1
Reduction Unit.....	Worm Gear-Bronze Gear
Reduction Gear Lubrication.....	Permanent
Reduction Unit Housing.....	20% Glass Filled Resin
Rear Wheel Drive	Planetary Gear System
Front Wheel Driven by.....	Continuous Belt

FILTER:

Type.....	Self Contained Cartridges
Filter Media.....	Corrugated Resin Impregnated Element
Porosity	50 Microns
Filter Area	25 Square Feet
End Plates	Molded Plastic
Gallons Circulated	60 GPM/3600 GPH

CASTINGS:

All castings are corrosion resistant Aluminum Alloy.

SHAFT and AXLE:

All parts such as axle, shafts, pins, fasteners, rods, etc., are corrosion resistant.

FLOATING ELECTRICAL CONDUCTOR:

Standard length is 100'.

DIMENSIONS:

Height	16 $\frac{1}{2}$ " (41.9 cm)
Width	16" (40.6 cm)
Length	18" (45.7 cm)

WEIGHT:

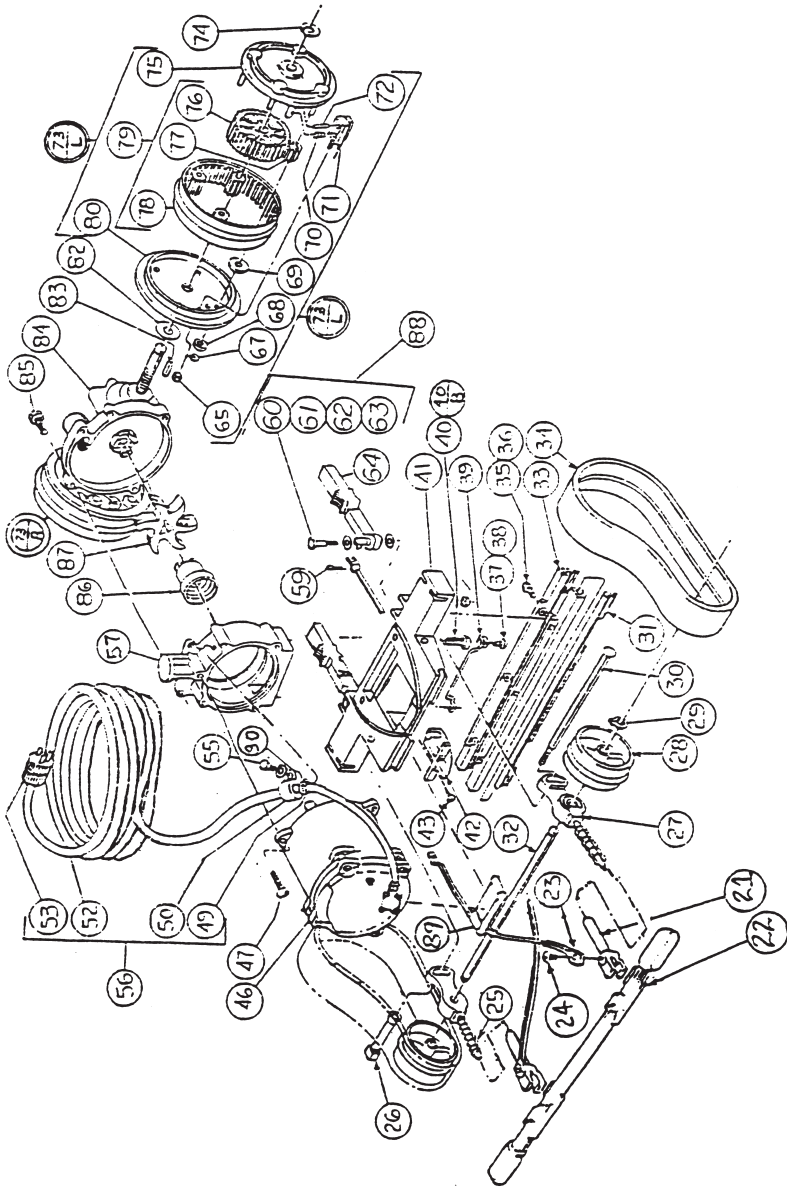
Net Weight of Aqua Prince with 100' Cord	42 lbs. (19.1 kg)
Gross Shipping Weight.....	47.5 lbs. (21.6 kg)

SHIPPING CARTONS:

Cleaner.....	20" x 18" x 16 $\frac{1}{2}$ " (50.8 cm x 45.72 cm x 41.96 cm)
--------------	---

KingShark

1995 TO PRESENT

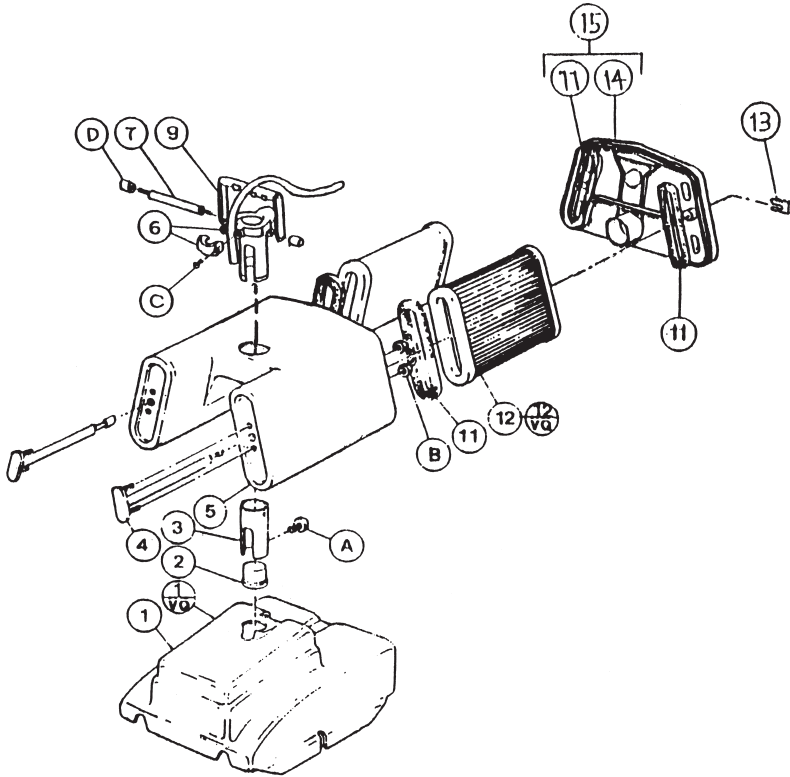


KEY	PART NO.	PART DESCRIPTION	REQ	L/H	R/H
21	1707	SLIDE - SENSOR BAR	2	1	1
22	1710	SENSOR BAR W/ BUMPER	1	1	1
23	1701	CABLE	2	1	1
24	1715	SCREW RD HD 10-32 X 1/2" SS	2	1	1
25	2207L	SPRING - SENSOR BAR SLIDE SS	2	1	1
26	1722	NUT - ADJUSTING ARM	2	1	1
27	1705	ARM - ADJUSTING	2	1	1
28	1702	WHEEL - FRONT	2	1	1
29	1702A	RING SNAP 3/8" SS	2	1	1
30	1723	BOLT - ADJUSTING ARM SS	2	1	1
31	1711	BLADE - INTAKE	2	1	1
32	1721	AXLE - FRONT	2	1	1
33	1712	HOLDER - INTAKE BLADE	2	1	1
34	1307V	DRIVE BELT - SHORT	2	1	1
35	1713	BOLT HEX HD 8-32 X 1/2" SS	6	1	1
36	420A	NUT HEX 8-32 SS	6	1	1
37	1720B	SCREW SLIT PAN HD 10-32 X 1/4" SS (As Needed)	2	1	1
38	1703B	WASHER STAR #10 SS (As Needed)	2	1	1
39	1720A	BAFFLE - WIRE SS (As Needed)	1	1	1
40	1720	BOLT HEX HD 5/16-18 X 1" SS (As Needed)	2	1	1
40B	1720-82	BOLT HEX HD 5/16-18 X 1" SS (If Wire Baffle Is Present)	2	1	1
41	1700-89	BASE - PLATE 'N'S	1	1	1
42	1716	SKID (As Needed)	1	1	1
43	1716A	SCREW SELF TAP PHIL #8 X 1/2" SS (As Needed)	2	1	1
46	Ref. Only	MOTOR - 1/2HP 110/240 VOLTS	1	1	1
47	2102B	SCREW RD HD 10-32 X 1 1/4" SS	3	1	1
49	419	CLAMP - HOSE SS	4	1	1
50	1511	CLAMP - MOTOR	1	1	1

KEY	PART NO.	PART DESCRIPTION	REQ	L/H	R/H
52	417A	CORD - 16/3 (REF ONLY)	1	1	1
53	5919	PLUG- ELECTRICAL	1	1	1
55	2121B	BOLT HEX HD 1/4-20 X 3/4" SS	1	1	1
56	507	P CORD ASSEMBLY 100' NS/PI	1	1	1
57	4148 P-82	HOUSING - PUMP PLASTIC	1	1	1
59	1703D	HAIR PIN COTTER 1/16 X 1/2" SS	2	1	1
60	1714C	BOLT HEX HD 10-32 X 1 1/2" SS	2	1	1
61	2204C	WASHER FLAT #10 SS	4	2	2
62	1714A	SLEEVE - GUIDE PIN SS	2	1	1
63	1610B	NUT LOCK HEX 10-32 SS	2	1	1
64	1703	ARM - REVERSING	2	1	1
65	1606A	NUT LOCK HEX 10-24 SS	4	2	2
67	1608	LOW PROFILE	8	4	4
68	1114A	CLIP 'E' 1/4" SS	8	4	4
69	1605	BUTTON - WHEEL	8	4	4
70	1607	WASHER - WHEEL PLASTIC	8	4	4
71	1606	SPRING - WHEEL LOCK SS	4	2	2
72	1607A	LOCK - WHEEL DRIVE W/ STUD	2	1	1
73L	1600L	PISTON - WHEEL LOCK SS	4	2	2
73R	1600R	WHEEL - DRIVE ASSEMBLY LEFT	1	1	1
74	1814D	WHEEL - DRIVE ASSEMBLY RIGHT	1	1	1
75	1601	RING SNAP 1/2"	2	1	1
76	1604	PLATE - WHEEL OUTSIDE	2	1	1
77	1603	GEAR - SUN (REF ONLY)	2	1	1
78	1602B	GEAR - PLANETARY (REF ONLY)	8	4	4
79	1602	GEAR - RING (REF ONLY)	2	1	1
80	1600A	GEAR - PLANETARY ASSEMBLY	2	1	1
82	1814C	PLATE - INSIDE WHEEL	2	1	1
83	1113	WASHER FLAT 7/16" SS	2	1	1
84	1800F	KEY 1/8" SS - DRIVE WHEEL	2	1	1
85	1808	GEAR BOX ASSEMBLY - FLEX	1	1	1
86	1102A	BOLT HEX HD 1/4-20 X 1 1/4" SS	5	1	1
87	P2-300	COLLAR - IMPELLER DRIVE	1	1	1
88	1714	IMPELLER - 6 BLADE	1	1	1
89	4209	GUIDE PIN - ASSEMBLY	2	1	1
90	2220B	PAD - MOTOR RUBBER NS WASHER FLAT 1/4" SS	1	1	1

KingShark

HOOD & FILTER ASSEMBLY



KEY	PART NO.	PART DESCRIPTION	REQ	L/H	R/H
1	1303	HOOD GRAY	1		
2	7802B	HAT - RISER	1		
3	7802	ADAPTER - HANDLE RISER	1		
A	2302A	BOLT HEX HD 1/4-20 X 5/8" SS	1		
4	P1-225L	TIE ROD - NEW STYLE	2	1	1
B	1610A	HEX NUT 10-32 SS	4	2	2
5	7801P	BODY - FILTER ASSEMBLY	1		
6	7825	RING - ADAPTER W/ CLAMP	1		
C	7804A	SCREW PAN HD 8-32 X 1" SS	2	1	1
7	7806	PIN - HANDLE	1		
D	1610B-82	NUT - SLOTTED SS	2	1	1
9	7805	HANDLE	1		
11	7813	GASKET FOAM 1/4" OVAL	4	2	2
12	7807L	FILTER - CARTRIDGE	2	1	1
13	7803	TIE ROD PUSH CLIP	2	1	1
14	REF. ONLY	PLATE - FILTER BACK (MUST BUY #7810-93G)	1		
15	7810-93G	COVER - FILTER ASSEMBLY	1		

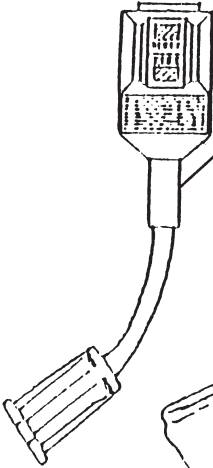
KingShark

ACCESSORIES

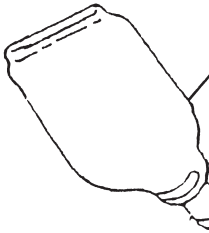
FLOAT-20" w/2' Rope
Part No. 6



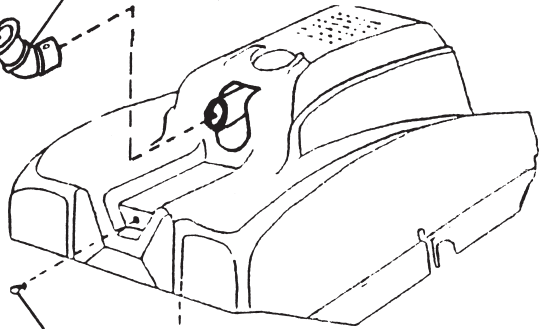
Portable G.F.C.I.
Part No. 5950



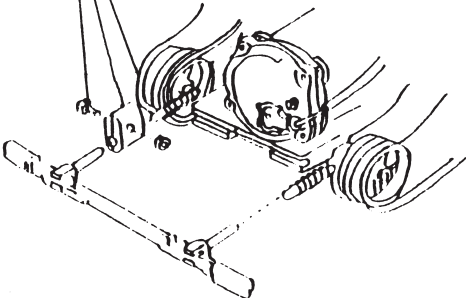
Sand & Silt Bag
Part No. 1508



Bag Adapter
Part No. 1506 P



Sensor Bar Weight
Part No. 1726 A/B



Rear Hood Weight
Part No. 1303W



KingShark

CADDY CART



Part # 99385 Caddy Cart - Available as option

KingShark

KingShark PREVENTATIVE MAINTENANCE

Congratulations on the purchase of the KingShark. The KingShark is built and designed to give you years of service.

In order to maximize efficiency and receive long term service, we suggest the following:

1. Thoroughly rinse entire unit after use.
2. Clean filters thoroughly after each use—a clogged filter will decrease efficiency dramatically.
3. Remove any twists in the cord after each use. Twisting should be minimal if the unit is functioning properly.
4. Avoid allowing the unit to “cool down” in the water. For example, if used on a timer, it is better to set for 5:00 a.m. to 8:00 a.m. (then remove) than it is to set for 12:00 a.m. to 3:00 a.m. (and remove it at 8:00 a.m.).
5. Inspect belts and filter frequently. Replace when necessary.
6. Always keep your Sensor Bar level; (a non-level Sensor Bar will cause the cord to twist).

PROTECT YOUR INVESTMENT!

Following these quick and easy steps will extend the life and efficiency of your KingShark.

If you have any questions, contact your local Service Center or call us at 1-800-327-0141.

PARTS ORDERING INSTRUCTIONS

Should you desire to order repair parts follow this simple procedure:

1. Ascertain each of the parts you will need and identify them by part number. Use this book as a guide, be sure to note that in some cases, due to continual product improvement, parts may vary depending on the year of manufacture.
2. Contact your local Factory Authorized Service Center with the list of parts you will need. Be sure to advise the Service Center of the KINGSHARK serial number and the date of purchase. If you need the location of your nearest Service Center, please call Aqua Vac Systems, 1-800-327-0141 or 561-688-0211.
3. All parts will be shipped immediately via best way on a collect freight basis, from the Service Center.
4. All shipments will be C.O.D. unless credit has been established with the Service Center.
5. All parts under limited warranty are confined to the specific limitations as stated.

NOTES

KingShark 2 Plus

The most *powerful*,
efficient and versatile *vacuum*
pool cleaners you
can buy.



1711 Longwood Road • West Palm Beach, FL 33409
(561) 688-0211 • (800) 327-0141 Nationwide • FAX (561) 688-0217
www.aquavacsystems.com • E-mail: info@aquavacsystems.com