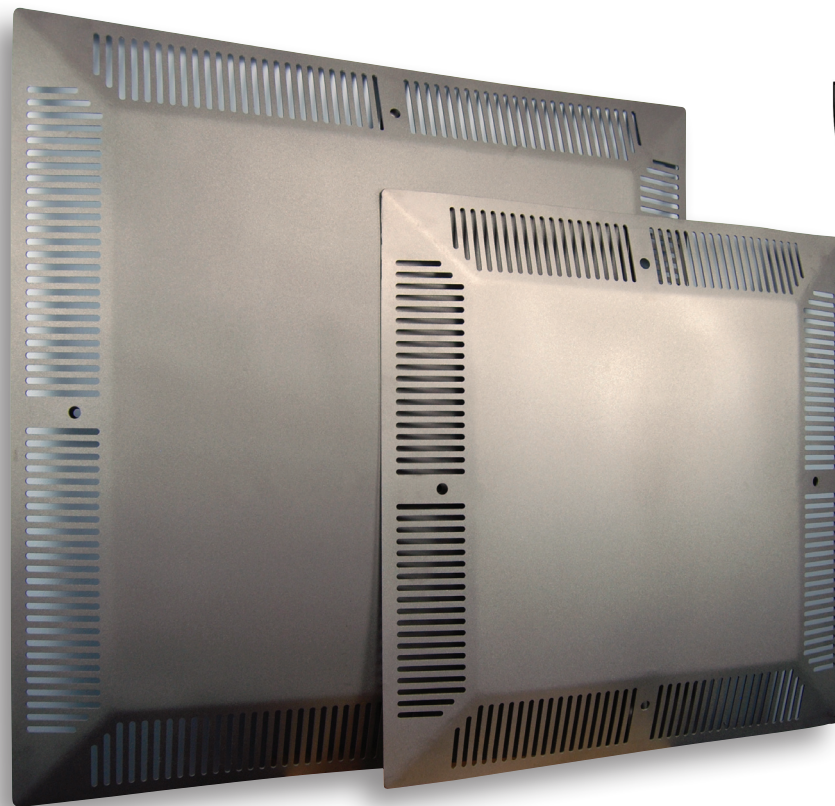


Anti-Entrapment Drain Cover

ASME A112.19.8-2007 Certified



The perfect balance between safety and performance

The *Virginia Graeme Baker Pool and Spa Safety Act* was signed into law on December 19, 2007, and requires entrapment prevention and protective barriers around pools, spas and hot tubs by December 19, 2008.

Eureka Manufacturing's ASME A112.19.8-2007 Certified Anti-Entrapment Drain Covers are designed to provide the highest standard of safety, while providing a professional look and peak level performance.

Available in four sizes and easy to install, our Anti-Entrapment Drain Covers will keep your aquatic facility safe with a rugged build and professional look that you've come to expect from Eureka Manufacturing.

Features:

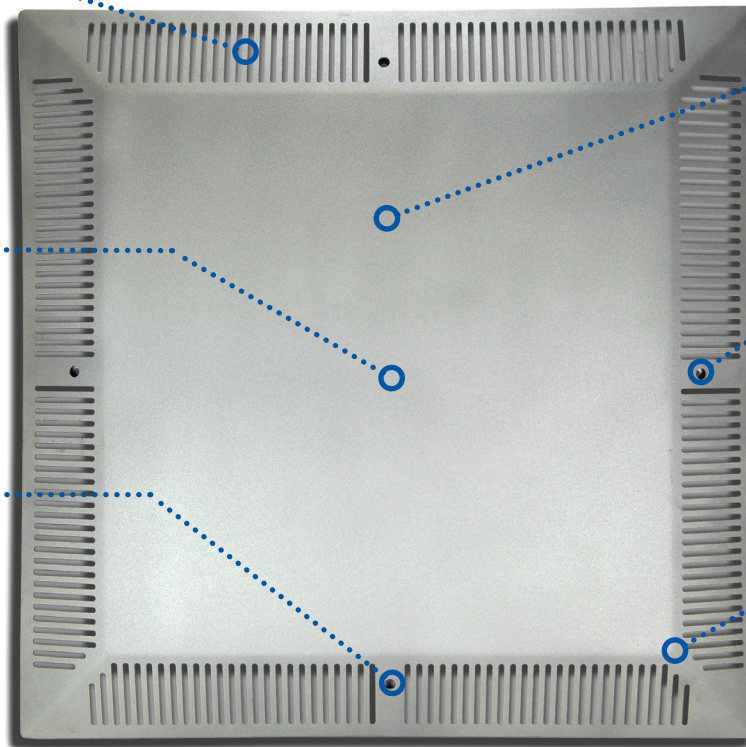
- Certified to ASME A112.19.8-2007
- Prevents bather entrapment
- Gradual slope with a low profile
- Easily installs over existing drains
- Durable 12ga stainless steel
- Aesthetically pleasing finish
- Anti-vortex design eliminates the potential for air in your pump



Unique grating system makes bather entrapment practically impossible

Aesthetically pleasing skid-resistant finish

Simple installation and requires little or no maintenance



Fabricated from low-carbon 12ga stainless steel, designed to last up to 20 years (hardware 10 years)*

Comfortable low-profile gradual slope

Anti-vortex design prevents air from entering your pump

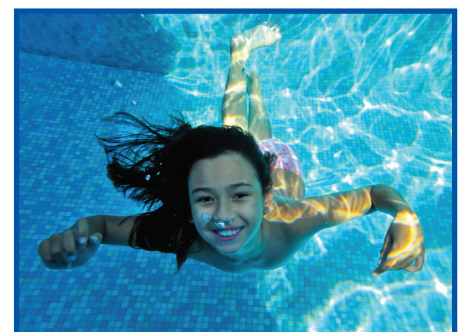
** Warranty Not Implied*

Part Number	Cover Size	GPM Rating	For Main Drain Sizes Up To	Material
AV20X20	20" x 20"	223	12" x 12"	12 GA 304 SS
AV26X26	26" x 26"	495	18" x 18"	12 GA 304 SS
AV32X32	32" x 32"	675	24" x 24"	12 GA 304 SS
AV44X44	44" x 44"	975	36" x 36"	12 GA 304 SS

Proudly Available From:



PO Box 2757
Bismarck, ND 58502-2757
800.437.8072 • sales@recsupply.com



EUREKA
MANUFACTURING CO.

SALES & ENGINEERING DIVISION • PO BOX 1473 • BISMARCK, ND 58502 • USA • PHONE: 701.223.7930 • FAX: 701.224.8294 • E-MAIL: SALES@EUREKAMANUFACTURING.COM

©2008 Eureka Manufacturing Co. All rights reserved.