

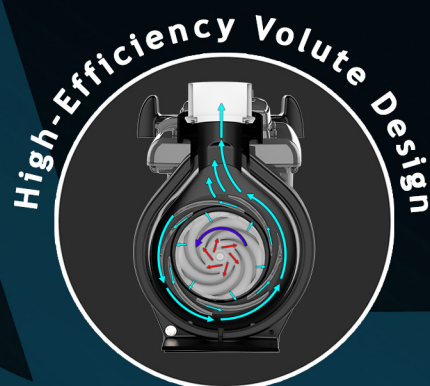
PIPELINE PUMPS™

HIGH-EFFICIENCY FULL-FEATURED PUMPS



Motor Features

- Permanent Magnet Motor (PMM) Drive System
- Total Enclosed Fan Cool (TEFC)
- Two sizes, variable speed 1½ HP and 3 HP
- Four programmable speeds from 800 to 3400 RPM
- Noise Reduction vibration dampening rubber insert
- RS485 communication port



Patented

NSF

ELECTRICAL

NSF

Certified to
NSF/ANSI/CAN 50



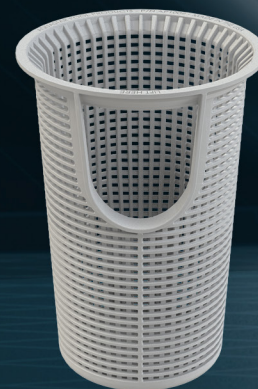
WiFi compatible
through phone app

Automation capability,
programmable start and
stop times

Integrated 2½" and
2" (socket) pump
union connections

Ergonomic lid handles
with quick-release
quarter-turn 4-point
locking lid

High-capacity
self-aligning HDPE
ultra-durable basket



MODEL
PLP150S
PLP300S

PRODUCT DESCRIPTION
POOL PUMP, 1.5 HP, VARIABLE SPEED, SMART MODEL
POOL PUMP, 3 HP, VARIABLE SPEED, SMART MODEL

(877) 768-2717 - www.aquastarpoolproducts.com

U.S. Patent No. 11,193,504, 11,668,329, and Other Patents Pending - SS013-060923