

 **Competitor®**
www.competitorswim.com
800-888-SWIM (7946)

Competitor® Elite Stor-Lane® Reel

ASSEMBLY INSTRUCTIONS

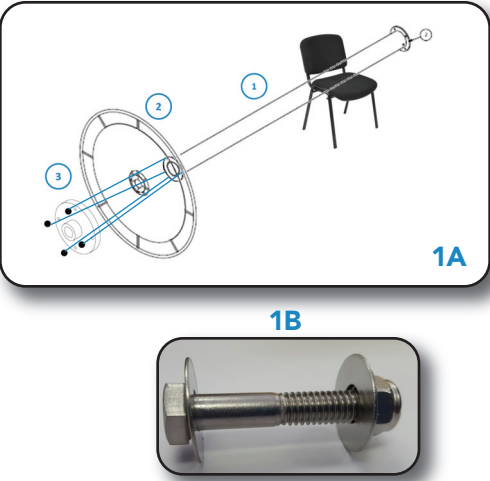


STEP 1

FASTEN "CAPTAIN'S WHEEL" TO WHITE SPACER DISC TO CORE

Details of Step 1

- 1. Align the 4 holes in the Core (#1), "Captain's Wheel" (#2) and White Spacer Disc (#3) **1A**. Run bolts through the holes and fasten with washers and nuts shown in **1B**.
- 2. Please note that the "nipple" on the White Spacer Disc (#3) should be pointing out.
- 3. From outside-in, you should see the following in a cross section view:
 - a) White Spacer Disc (Nipple Pointing Out)
 - b) "Captain's Wheel" (Smooth Side Out)
 - c) Core
- 4. Repeat on the other side and the "Tube Assembly" is complete.

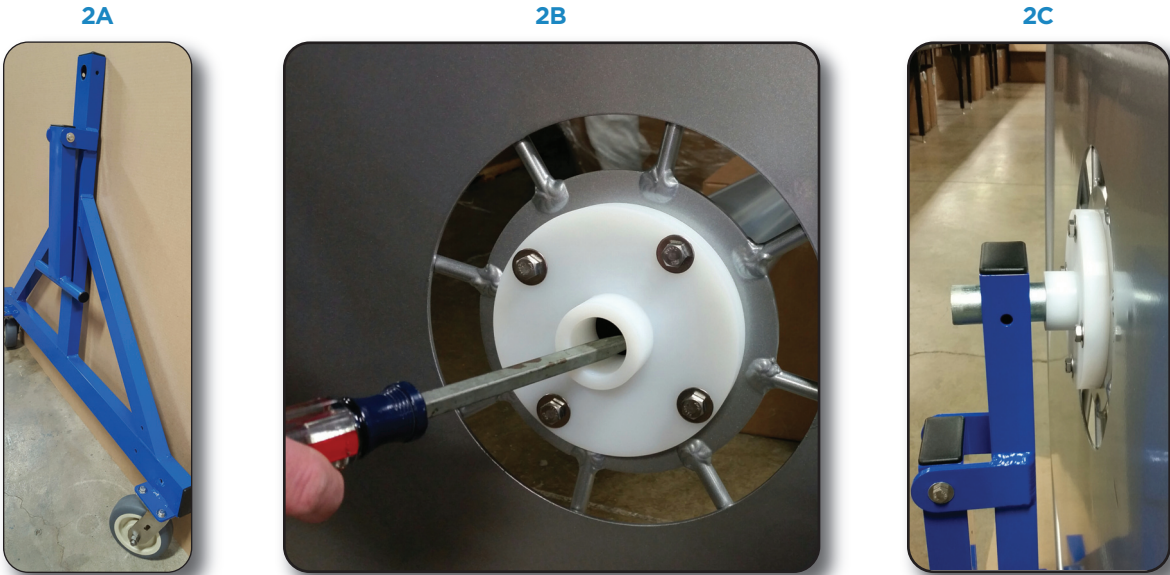


STEP 2

ATTACH THE END-FRAMES TO THE CORE ASSEMBLY CREATED IN STEP 1

Details of Step 2

- 1. Roll the "Tube Assembly" (done in Step1) against a wall so it cannot move.
- 2. Take one of the end frames **2A** and align the hole on the end frame atop the White Spacer "Nipple."
- 3. Slide the axle through the end frame; through the nipple; through the Captain's Wheel, through the core and out the other side.
- 4. **Note when it comes through on the other side, it will "hit" the bottom of the White Spacer Disc. You will need to use a screwdriver to "pick it up" and get it through the white nipple as shown in 2B.**
- 5. Insert bolt horizontally through the end frame; through the hole in the axle and out of the end frame shown in **2C**. Fasten with washers and nut.
- 6. Take the second end frame and repeat the process.

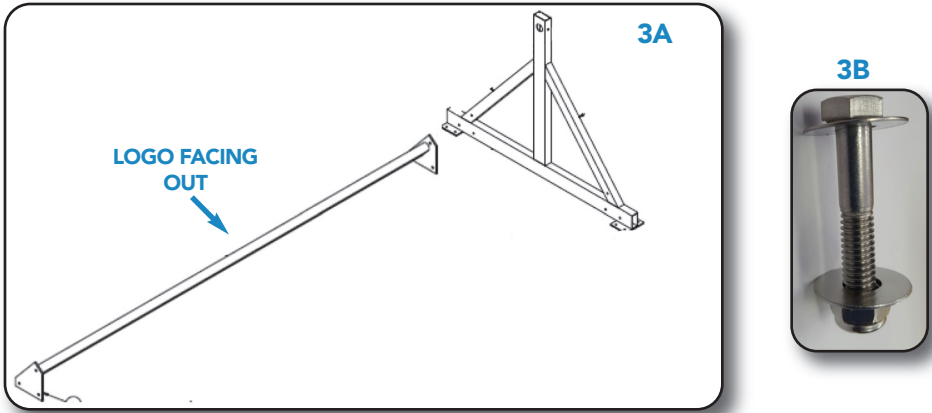


STEP 3

ATTACH THE SIDE-RAIL TO THE ASSEMBLY CREATED IN STEP 2

Details of Step 3

- 1. Take the Side Rail and align them with the holes on the End Frames which are a part of the Assembly created in Step 2.
- 2. **Note the Side Rails should be positioned so the Competitor Logo is upright/visible and at a 45 degree angle.**
- 3. Fasten the Side Rail to the Assembly using three bolts, washers and nuts on each end of the Side Rail.
- 4. Repeat with the second Side Rail.



STEP 4

FINISHING TOUCHES

Details of Step 4

- 1. Make sure brakes are in the "Active/On" position and upright, and put the cart in an upright position.
- 2. Add the remaining stoppers to the ends of the axle.
- 3. Tighten all bolts/nuts throughout the entire Elite Stor-Lane® Reel.
- 4. Reel Away!



Elite Stor-Lane Reel Cover

Improve the longevity of your lanes by covering your Elite Stor Lane Reel with our custom vinyl cover. Available in Competitor Blue to match the color of the storage reel.

Check it out at
www.competitorswim.com.