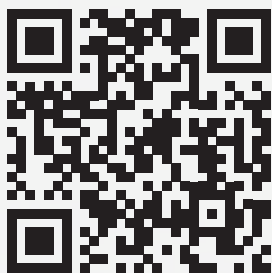




EXCLUSIVE U.S. DISTRIBUTOR



A close-up, low-angle shot of a bright yellow umbrella canopy, showing the underside of the fabric and the white metal support structure. The canopy is partially open, and the background is a plain, light gray.

NOVA

O W N E R S M A N U A L





Congratulations on purchasing your NOVA Giant Center Post Umbrella. The NOVA is manufactured using the highest standard materials and fabrics on the market, and is perfectly designed to give you many years of enjoyment. The following information is to inform you how to operate your NOVA Cantilever Umbrella to ensure trouble free use and ease of operation. Please follow these instructions as they are designed to assist operation and prolong the life of your umbrella.

GENERAL INFORMATION

Your NOVA Umbrella is principally intended for use in low to moderate wind conditions and will provide you with many hours of protection from sun and light rain. You will get maximum benefit from your umbrella when you use it in accordance with our instructions and in the weather condition for which it was designed.

- Do not leave umbrella open when unattended, particularly in windy conditions.
- Your NOVA Umbrella should be closed and securely strapped in strong winds and adverse weather conditions.
- Always secure your umbrella to an appropriate base.
- Please avoid any modifications to your umbrella, except those made by an authorized Frankford Umbrellas customer service agent. Unauthorized modifications may void the warranty.
- Make sure your NOVA is dry and clean prior to storing away for extended periods of time to prevent mold from developing.
- Be careful when closing to ensure the canopy does not get caught or "pinched" by the umbrella arms. This is particularly important before storing the umbrella away for extended periods of time or if the umbrella is to be laid horizontally for storage. Damage to the fabric caused by "pinching" is not covered by the warranty.
- Inspect the installation fitting/base on a regular basis and tighten as necessary.

SIMPLE MAINTENANCE PROCEDURES

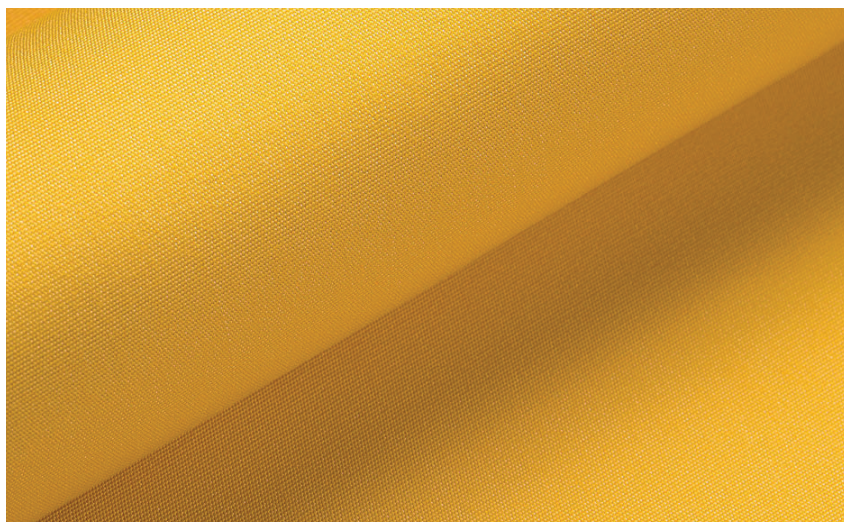
- In coastal or metropolitan environments, frequent washing of the complete unit is very beneficial.
- Fold acrylic canvas as mentioned in “Closing The NOVA” (Page 6). This will prolong the new look of the canvas and prevent marking caused by “pinching” in the alloy frame.
- All parts are virtually maintenance free (e.g. aluminum, stainless steel, etc.), however, it is recommended that if the umbrella is not to be used for an extended period of time (winter months), to place the umbrella in storage. You may even remove the spigot when the umbrella is not in use, as it can be a tripping hazard.
- The acrylic canvas may be cleaned or mold removed by using a mild mixture of an approved mold remover and warm soapy water with a soft bristle brush. Test first on the securing strap to ensure no damage will be caused to the umbrella canopy fabric.
- **DO NOT USE BLEACH BASED DETERGENTS TO CLEAN THE UMBRELLA CANOPY.**
- The optional protective cover should be used when the umbrella will not be operated for an extended period of time.

NOVA

FABRIC CARE

RECacril Marine Grade Acrylic Fabric Infinity Process is a highly technological finish, providing RECacril with long lasting protection against mold and mildew, excellent water and oil repellency and protection from both sun and water. However, the accumulation of dust, pollution particles, foreign organic materials and general dirt can damage this protection, shortening the life of the RECacril, so they should be removed. The most effective method for maintaining RECacril is to clean the canvas once a month with water using a low pressure hose. It is very important that after cleaning with water, the canvas be allowed to completely dry before rolling or storing your umbrella. If for any reason you have to roll and/or store a wet umbrella, it must be unrolled and opened as soon as possible to let it dry. In times of continuous rain, it is advisable to keep the umbrella rolled and stored.

If periodic washing with water is done, in most environments, you should only need to do a thorough cleaning every 2-3 years.



CASUAL CARE & CLEANING

- Brush off dust and dirt with a soft brush. NEVER brush with stiff brushes since this can damage the fabric finish.
- Spray the umbrella with clean water. If a hose is used, avoid high pressure.
- Prepare a solution of solvent-free soap in warm water (no more than 100°F) and apply it to the fabric and stitching.
- Scrub with a soft brush, allowing the solution to penetrate the fabric.
- Rinse with water to remove all traces of soap.
- Let air dry and do not close the umbrella until the canvas is completely dry.

INTENSIVE CARE & CLEANING

RECacril® is highly resistant to the growth of fungus, mold, and mildew, however these can grow on embedded dirt. To clean these stains, follow these more intensive cleaning procedures.

- Brush off dust and dirt with a soft brush. NEVER brush with stiff brushes as this can damage the fabric finish.
- Prepare a solution with 10% household bleach, 20% solvent-free neutral detergent (Free & Clear detergents) and 70% water.
- Apply the solution to the fabric, allowing to remain between 15 and 20 minutes maximum.
- Rinse with clean water several times. Any singular bleach residues remaining on the canvas, combined with the sun, could damage the fabric and stitching.
- Let air dry and do not close the umbrella until the canvas is completely dry.
- Repeat the process if necessary.

OPENING THE NOVA

FIRST TIME OPENING

Ensure all packaging and wrapping material has been removed. There may be some wrapping material on the canopy arms underneath the fabric canopy. Partially open the umbrella and get in underneath the fabric canopy to remove all of this wrapping before fully opening the umbrella. The umbrella arms are fitted with **PLASTIC SPACERS**. The spacers help to keep the arms spread apart when the umbrella is closed, making it easier to open next time it is used. When the umbrella is packaged for shipping the spacers are not engaged. Before using the umbrella for the first time, you must engage the spacers by sliding them into position up the umbrella arms. Slide the spacers up using a long rod, broomstick handle or similar. Click/push them into position once they have reached the hole location on the arm.

- Remove the strap from the canopy.
(Figure A)
- Insert the winder handle into the winder hole on the mast and rotate in a clockwise direction.
- Before cranking your umbrella open, gently spread the canopy arms open with your hand. (Figure A)
- Continue winding until the canopy is fully open. Do not over wind.

NOTE: The Winder Handle will become a little harder to wind as the umbrellas nears fully open. This is normal particularly when the acrylic fabric is new.

- The Winder Handle may be removed if desired as a safety and security feature.



FIGURE A

CLOSING THE NOVA

- Insert the winder handle and rotate in a counter-clockwise direction.
- Before the ribs fully close against the mast, pull the canopy out from within the arms to safeguard any “pinching” of the fabric within the umbrella frame. This is easily done by pulling the fabric to the outside of the frame using your hand to pull the excess in each of the 8 sections of frame. Then fold it left over right, and so forth.
- Put the canopy strap securely around both the mast and canopy frame.
- If you have purchased the protective cover, hold the opening of the bag away from you and walk towards the umbrella. Let it “fall” slowly over the top hub and zipper the cover. (**Figure A**).

NOTE: Please be careful and make sure that the canopy fabric is not pinched by the zipper of the cover bar. (**Figure B**).

TIP: This is an additional precaution if you have purchased the protective cover.



INSTALLATION PROCEDURE

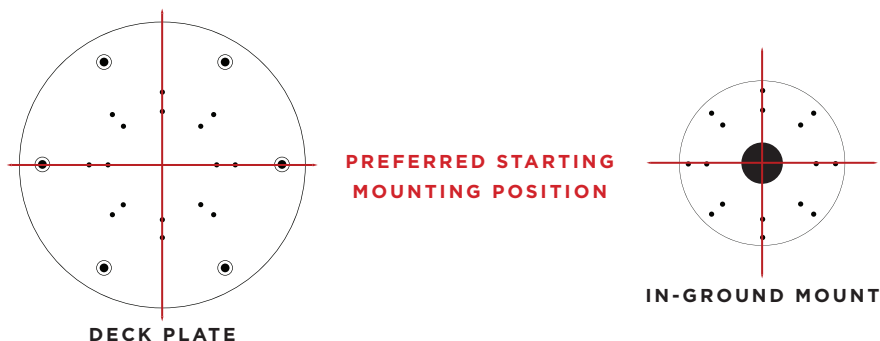
NOVA

Your NOVA Giant Center Post Umbrella is delivered fully assembled. There are three different ways to install your NOVA Giant Center Post Umbrella:

Prior to installing your installation mounts please read the important information below.

Make sure you have sufficient space when installing your NOVA Giant Center Post Umbrella. 18' of space is needed to slide the NOVA onto the hinged spigot. After you slide your NOVA onto the spigot, it is advised two or more persons tilt the NOVA to its upright position.

There is a locking pin hole at the base of the mast that runs through the spigot. This is to ensure the NOVA mast does not lift off the spigot. There are 16 x threaded holes in the center area of the 16" diameter base plate and on the top of the in-ground fitting sleeve plate and these are called the threaded spigot holes. The umbrella spigot will be attached to the base fitting using the supplied stainless steel spigot bolts. Before installing your base plate or in-ground fitting sleeve, draw an imaginary straight line through two sets of threaded spigot holes. This will be the direction of one of the flat sides of your umbrella. Use these imaginary lines to square off your base fitting installation. This is of particular relevance when installing square shape umbrellas and not so important with an octagonal umbrella. Once you have erected the umbrella if you find it is still not completely squared off to your area, you can always turn the umbrella 90-degrees on the spigot and re-drill a new spigot hole through the steel spigot inside the umbrella (a good quality drill bit and high-powered drill will be required).



There are three different ways to install your NOVA umbrella. Select the installation method from the following pages for the relevant instructions.



IN-GROUND MOUNT INSTALLATION OPTIONS

Your umbrella comes with a hinged spigot. Once you have installed the spigot according to the instructions below, slide the umbrella on to the top of the spigot and raise the umbrella. This is recommended as a 2-3 person operation.

The In-Ground Mount is a galvanized steel fitting that must be concreted into position. Because terrain differs from thick dirt to fine soil, a different sized hole must be prepared and a different volume of concrete is used. As a guide, a 19" x 19" x 27" deep hole is a minimum requirement for heavy dirt terrain. A post hole borer can be used to deepen the center of the footing. When pouring the concrete, it is advisable to drop a few lengths of reinforcing steel bar into the hole to prevent the concrete from cracking. Remember that the depth of the hole is more important than the width and it is much easier to make the hole oversized than to try to re-stabilize the In-Ground fitting should it shift over time. If applicable, patio tiles or pavers have to be removed to facilitate this In-Ground mount and then cut to suit when replaced. If installing through a thin layer of concrete or asphalt, a core drill should be used to drill a 6" diameter hole in the concrete/asphalt. The remainder of the hole below can then be dug out by hand or post hole digger.

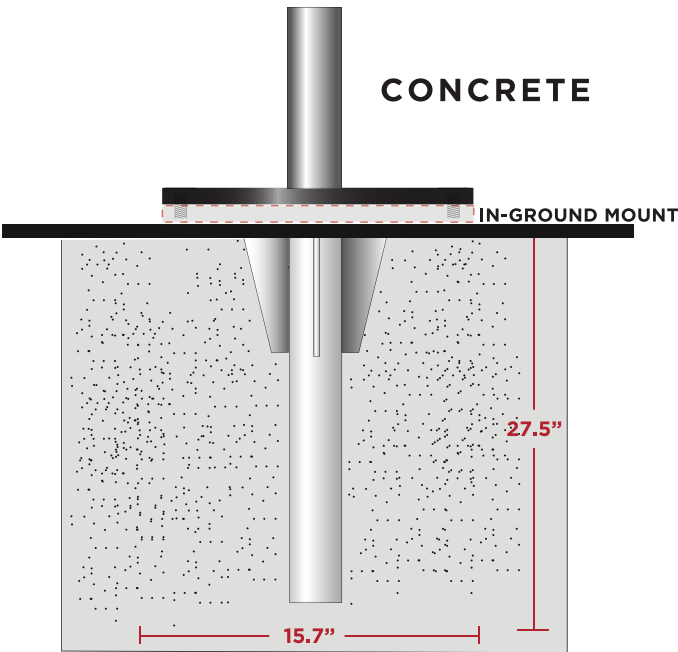
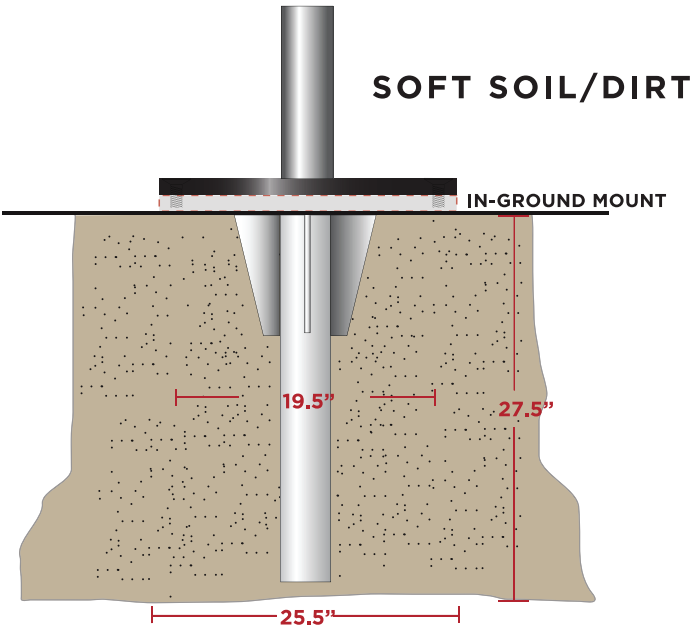
NOTE: When ready to install the NOVA on to the spigot, be sure to remember this is a 2-3 person operation. After the umbrella is on the spigot and upright, do not forget to install the closing screw on the spigot. This will keep the umbrella upright.

IMPORTANT: Place the retaining bolt through the mast of the NOVA and through the spigot. This is the final step in assuring your umbrella is in place.

TIP: Be sure to place the crank handle in a safe place for future use.

TIP: The In-Ground Mount comes with four "grub-screws" pre-installed in the threaded holes. This is to prevent concrete slurry working its way up into the threaded holes. As an added precaution it is a good idea to place tape on the underside of the holes. Once the In-Ground Mount has been installed, remove the grub-screws with an Allen key.

IN-GROUND MOUNTING





DECK/CONCRETE INSTALLATION OPTIONS

Your umbrella comes with a hinged spigot. Once you have installed the spigot according to the instructions below, slide the umbrella on to the top of the spigot and raise the umbrella. This is recommended as a 2-3 person operation.

DECK PLATE INSTALLATION ALTERNATIVES

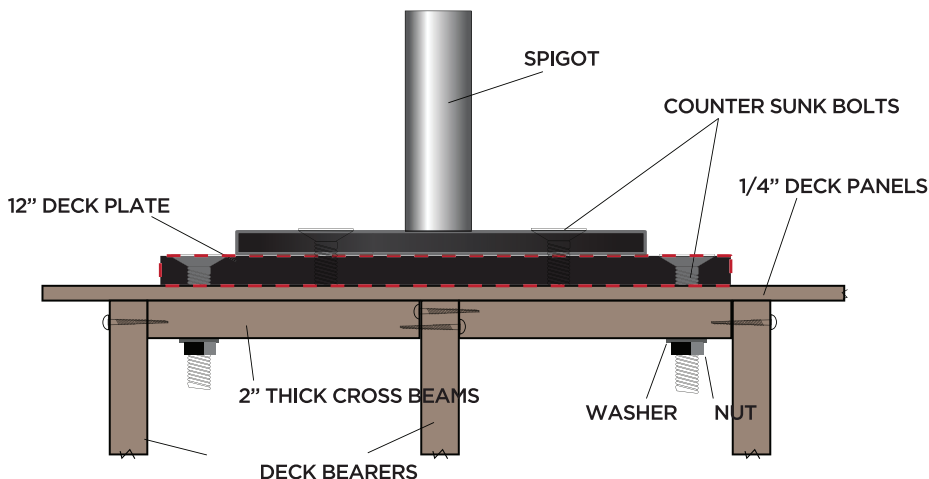
INSTALLING ON A WOOD DECK: Your deck plate must be bolted to the frame of the deck and not only to the deck planking. You need to fasten one or two braces between the deck joists or bearers that form the structural frame of the deck. It is suggested that two pieces of wood of 8"W x 2"-4" thick be secured under the deck planking and between the deck bearers and fasten these braces to the joists/bearers with suitable fastenings. These may be large galvanized nails, brackets or similar. The Deck Plate should now be set in the required position and bolted through the deck planking and the fixed braces by using 1/2"x6" stainless steel bolts and nuts with a large washer on the underside.

INSTALLING ON A CONCRETE SLAB: When installing your umbrella on a concrete surface, fix the Deck Plate to the concrete using four concrete screws, "Dyna-Bolts" or similar fastenings. The diameter of the countersunk holes in the Spigot is .5", use M10 bolts included with your umbrella. The length of the fastenings will depend on the depth of the concrete and whether there are any tiles or pavers above the concrete. As a minimum, 3" of fastening in concrete is required.

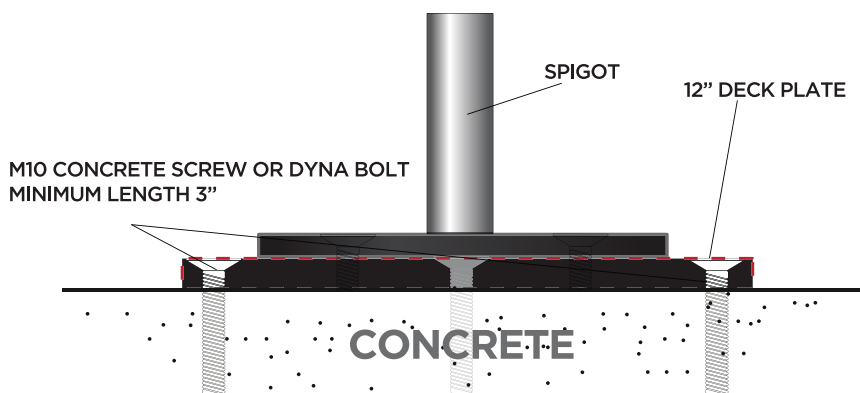
IMPORTANT: Align one of the countersunk holes in the Deck Plate with your desired 12 o'clock position on the umbrella.

TIP: The Deck Plate comes with four "grub-screws" pre-installed in the threaded holes. Remove the grub-screws with an Allen key.

WOOD DECK



CONCRETE SLAB/SURFACE



IMPORTANT: CONCRETE SLAB SHOULD HAVE A MINIMUM DEPTH OF 6".
NO SCREW OR FIXING TO BE WITHIN 6-8" OF CLOSEST EDGE OF CONCRETE SLAB.



WEIGHTED BASE INSTALLATION

Your umbrella comes with a spigot. Once you have assembled the base according to the instructions below, attach the spigot to the base using the supplied Allen key and bolts. Once the base is fully secured, lift the umbrella on to the top of the spigot. This is recommended as a 2-3 person operation.

NOTE: Before securing the spigot to the base, please be aware of how the NOVA will be positioned. This is crucial in the placement of your NOVA umbrella.

(If you have multiple square NOVA, be aware to match the straight angles up to neighboring umbrella for optimal spacing).

UMBRELLA BASE INSTALLATION

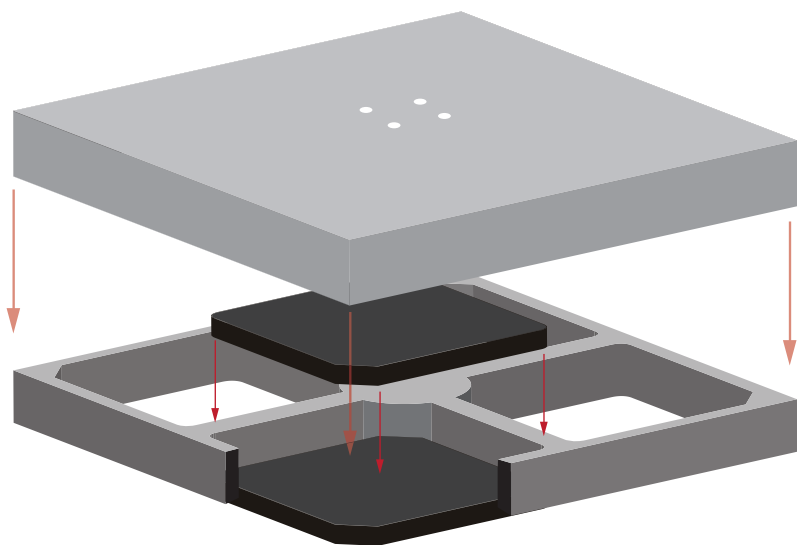
INSTALLING TO 55ONGU: Galvanized Steel Base ships ready to use. The Spigot must be bolted to the universal deck plate already installed on the aluminum lid with the hardware supplied. Match threaded holes on the Spigot with the corresponding holes on the universal deck plate.

NOTE: When ready to install the NOVA on to the spigot, be sure to remember this is a 2-3 person operation. After the umbrella is on the spigot and upright, do not forget to install the closing screw on the spigot. This will keep the umbrella locked in an upright position.

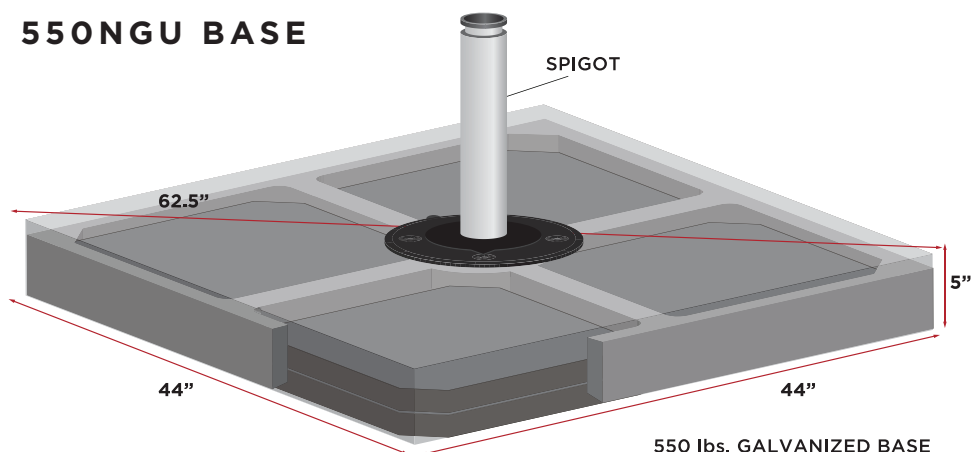
IMPORTANT: Place the retaining bolt through the mast of the NOVA and through the spigot. This is the final step in assuring your umbrella is in place.

TIP: Be sure to place the crank handle in a safe place for future use.

TIP: The 55ONGU comes with four “grub-screws” pre-installed in the threaded holes of the universal mounting plate. This is to protect the threads from damage during transportation. Remove the grub-screws with the supplied Allen key.



550NGU BASE



550 lbs. GALVANIZED BASE
BASE STORES WEIGHTED PAVERS

COMMERCIAL WARRANTIES

7 YEAR WARRANTY

Frankford Umbrellas offers **MARINE GRADE 9 OZ. SOLUTION DYED ACRYLIC FABRIC** from several mills, including Sunbrella, Outdura, and Recasens. All marine grade acrylic fabrics we use carry a warranty of seven (7) years from the original date of purchase. All furniture grade fabrics we use carry a warranty of five (5) years from the original date of purchase.

The warranty protects against the loss of characteristics, rot, mildew, and color fastness typical in normal atmospheric conditions. The product must be properly installed and maintained, and under normal use and environment. This warranty does not cover damage caused by: abuse, negligence, vandalism, burns or fire of any kind, improper cleaning techniques, normal wear, perforations; weather soiling; environmental pollution stains; natural disasters; or acts of nature. Damage caused by the storage method or location used by clients is also not covered.

Replacement fabric canopy is covered for the time remaining in the original warranty and does not activate a new 7 or 5 year warranty.

3 YEAR WARRANTY

Frankford Umbrellas warrants the **FRAME STRUCTURE OF THE NOVA SERIES** for a period of three (3) years from the original date of purchase. This warranty includes manufacturer defects to the notch, runner, center pole and skeleton structure. The warranty, if applicable, does not cover labor, frames, systems and installation supplied by the dealer or reseller.

3 YEAR WARRANTY

Frankford Umbrellas warrants all **FINISHES ON NOVA SERIES** for a period of three (3) years from the original date of purchase. This warranty includes chipping, peeling, flaking, bubbling, and fading of the finish on the aluminum center poles only.

WIND DISCLAIMER

Frankford's umbrellas are all thoroughly tested and built to ensure durability and longevity, however we do not recommend the use of any non-permanent umbrella structure in winds that exceed 25 MPH. Umbrellas should **ALWAYS** be closed and secured when not in use, and taken down when winds reach unsafe conditions.

The **NOVA SERIES PREMIUM CANTILEVER UMBRELLA** is engineered to withstand 50 MPH sustained winds, and has been tested at 50 MPH sustained winds.

IMPORTANT: Wind ratings do NOT form part of, nor fall under, any Frankford Umbrellas' warranties. Wind ratings are intended as guide to the relative strength of the umbrellas only. Wind can be extremely variable, depending on surroundings, elevation, angle of gusts, etc., and in any high wind ALL umbrellas should be closed and secured immediately.

RUST DISCLAIMER

Rust is a natural part of the aging process of all steel or iron based materials and is therefore not considered a defect and is not covered under any Frankford Umbrellas' warranties. Steel bases and mounts are designed to require minimum maintenance, and should be kept clean and well maintained.

DISCLAIMER: Frankford Umbrellas' warranties **DO NOT COVER** damage to any umbrellas or umbrella bases related to extreme weather, abuse, or misuse; or any damage which occurs as a result of contact with the ground or any other foreign object due to sudden and severe weather events or other extreme acts of nature.

Frankford Umbrellas' warranties are only applicable to products that are properly secured to a weighted adequate base or anchoring system equal to or greater than recommended by Frankford Umbrellas. Failure to properly secure umbrellas equal to or greater than recommended will VOID all warranties.

If warrantable damage occurs, Frankford will refinish, replace or repair any item in this category at its own discretion.

RESIDENTIAL WARRANTIES

10 YEAR WARRANTY

Frankford Umbrellas offers **MARINE GRADE 9 OZ. SOLUTION DYED ACRYLIC FABRIC** from several mills, including Sunbrella, Outdura, and Recasens. All marine grade acrylic fabrics we use carry a warranty of ten (10) years from the original date of purchase. All furniture grade fabrics we use carry a warranty of five (5) years from the original date of purchase.

The warranty protects against the loss of characteristics, rot, mildew, and color fastness typical in normal atmospheric conditions. The product must be properly installed and maintained, and under normal use and environment. This warranty does not cover damage caused by: abuse, negligence, vandalism, burns or fire of any kind, improper cleaning techniques, normal wear, perforations; weather soiling; environmental pollution stains; natural disasters; or acts of nature. Damage caused by the storage method or location used by clients is also not covered.

Replacement fabric canopy is covered for the time remaining in the original warranty and does not activate a new 10 or 5 year warranty.

5 YEAR WARRANTY

Frankford Umbrellas warrants the **FRAME STRUCTURE OF THE NOVA SERIES** for a period of five (5) years from the original date of purchase. This warranty includes manufacturer defects to the notch, runner, center pole and skeleton structure. The warranty, if applicable, does not cover labor, frames, systems and installation supplied by the dealer or reseller.

3 YEAR WARRANTY

Frankford Umbrellas warrants all **FINISHES ON NOVA SERIES** for a period of three (3) years from the original date of purchase. This warranty includes chipping, peeling, flaking, bubbling, and fading of the finish on the aluminum center poles only.

WIND DISCLAIMER

Frankford's umbrellas are all thoroughly tested and built to ensure durability and longevity, however we do not recommend the use of any non-permanent umbrella structure in winds that exceed 25 MPH. Umbrellas should ALWAYS be closed and secured when not in use, and taken down when winds reach unsafe conditions.

The **NOVA SERIES PREMIUM CANTILEVER UMBRELLA** is engineered to withstand 50 MPH sustained winds, and has been tested at 50 MPH sustained winds.

IMPORTANT: Wind ratings do NOT form part of, nor fall under, any Frankford Umbrellas' warranties. Wind ratings are intended as guide to the relative strength of the umbrellas only. Wind can be extremely variable, depending on surroundings, elevation, angle of gusts, etc., and in any high wind ALL umbrellas should be closed and secured immediately.

RUST DISCLAIMER

Rust is a natural part of the aging process of all steel or iron based materials and is therefore not considered a defect and is not covered under any Frankford Umbrellas' warranties. Steel bases and mounts are designed to require minimum maintenance, and should be kept clean and well maintained.

DISCLAIMER: Frankford Umbrellas' warranties **DO NOT COVER** damage to any umbrellas or umbrella bases related to extreme weather, abuse, or misuse; or any damage which occurs as a result of contact with the ground or any other foreign object due to sudden and severe weather events or other extreme acts of nature.

Frankford Umbrellas' warranties are only applicable to products that are properly secured to a weighted adequate base or anchoring system equal to or greater than recommended by Frankford Umbrellas. Failure to properly secure umbrellas equal to or greater than recommended will VOID all warranties.

If warrantable damage occurs, Frankford will refinish, replace or repair any item in this category at its own discretion.



PURCHASE/INSTALLATION WARRANTY

This warranty applies to the original purchaser only. In the case of installations, the owner is to ascertain the position of all underground pipes, electrical wires and gas lines, and notify the installer of any obstacles. Although all care will be taken, no responsibility can be accepted for any damage during installation.

All warranties are only valid if the umbrella is opened and closed as per the instructions in this manual. It is highly recommended to close and tie the umbrella when strong winds are expected. If strong winds are expected for a long period of time, it is recommended that the umbrella be removed from its base and stored. When closing the umbrella for extended periods of time, the canopy must be folded in such a way as to avoid "pinching" of the fabric in the umbrella ribs/arms (**refer to page 2 & 6**). Wear and tear caused by "pinching" of the fabric by the umbrella framework is not covered under any warranty.

If the umbrella is to be transported without the original packaging, then the canopy should be removed from the frame to avoid damage during transit.

Frankford Umbrellas reserves the right to determine whether or not fault is caused by faulty workmanship, material or a defective part. Where fault is determined, we reserve the right to repair parts or replace products at our own discretion.



Exclusive U.S. Distributor

NORTH AMERICAN HEADQUARTERS

FRANKFORD UMBRELLAS

110 GAITHER DR. MOUNT LAUREL NEW JERSEY, 08054 (856) 222 4134

www.frankfordumbrellas.com