

# How to select the Paragon Starting Platform Model for your venue in 5 easy steps.

When choosing a starting platform, your first consideration should be (1) the size of the platform top. (Note: All ruling bodies call for a minimum of 20" x 20" starting platform tops.) Depending upon size (2), you have a choice of single (Paraflyte or Quickset Anchor) or dual legs. (3) Select the anchor style (Paraflyte, Quick Set or Competitor). (4) Then select color and graphics. (Standard sand finish is white) (5) Select the specific model.

1

SELECT TOP SIZE

## Standard Size

(24" x 20")

## Track Start Size

(32" x 24")

2

SELECT SINGLE OR DUAL



Single Leg or Dual Leg



Dual Leg Only

3

SELECT ANCHOR STYLE

## Single Leg

Paraflyte

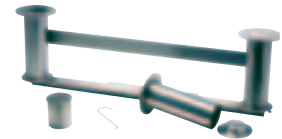
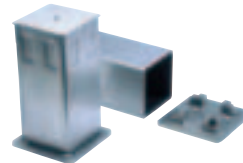
Quickset

## Dual Leg

Competitor

Standard Paraflyte

Long Reach Paraflyte



Single Leg only. Bolt mounted. Tools required for installation of starting platform.

Single Leg. Taper lock. No tools required for installation of starting platform.

Dual Leg only. Taper lock. No tools required for installation of starting platform.

4

SELECT COLOR OR GRAPHICS OPTION

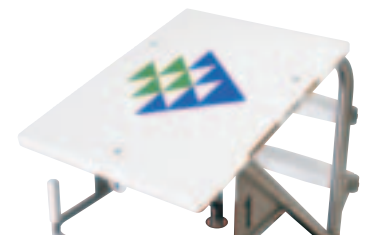
## Colors

All Paragon Starting Platforms are available in any color in the Pantone Matching System. (Standard Sand Finish is White)



## Graphics

Custom logos and numbering are available on all models.



5

SELECT MODEL NUMBER

## Select Model

See pages 12 & 13 for How To Size and to view Platform Selector Charts. When choosing a model consider the specific requirements of applicable ruling bodies, e.g. FINA, NCAA, USAS, USMS, NFHS, as well as local, municipal and state statutes. If this selection does not meet your precise requirements, we will make something that does. Custom Platforms are our specialty.

Please see the following pages for remaining selection criteria.



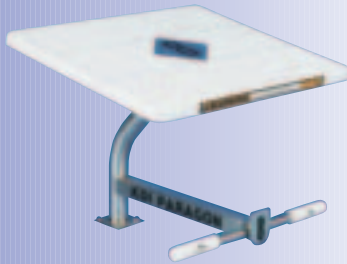
**WARNING:** Starting Platforms are to be used only by trained competitive swimmers. Only shallow racing dives should be executed. Impact with the pool bottom can cause serious injury. Please refer to applicable codes and regulations for your specific installation.



# Full Height Single Leg

These platforms are designed to render the maximum allowable height above water. They are available in a variety of configurations to accommodate your specific facility requirements and come with your choice of two anchoring systems, Paraflyte or Quickset. All Full Height Single Leg platforms come with anchors. Platform top consists of a 1-1/4" thick UV inhibited 24"x 20" polypropylene top with patent-pending, cross-grooved, non-skid, white sand finish.

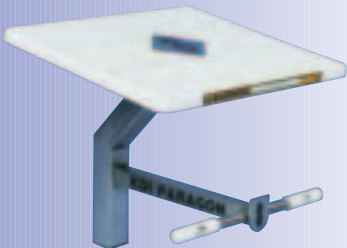
The Shortee Model is designed for pools where the deck-to-water dimension exceeds 12". The anchor setback ("B" dimension) is fixed at 18".



## Shortee Model Paraflyte

Requires tools for installation and removal. Uses Paraflyte Anchor I.D. No. 22201

[Spec Sheet SP 10.57](#)



## Shortee Model Quickset

Requires no tools for installation or removal. Uses Quickset Anchor I.D. No. 23301

[Spec Sheet SP 10.58](#)

The Classic Standard Model is designed to fit most pools. The anchor setback ("B" dimension) ranges from 21" to 26" depending upon platform height.



## Classic Standard Paraflyte Full Height

Requires tools for installation and removal.

Uses Paraflyte Anchor I.D. No. 22201

[Spec Sheet SP 10.51](#)



## Classic Standard Quickset Full Height

Requires no tools for installation or removal.

Uses Quickset Anchor I.D. No. 23301

[Spec Sheet SP 10.52](#)

The Long Reach Standard is designed for deck level pools with wide overflow gutter systems. The anchor setback ("B" dimension) is fixed at 34-1/2".



## Long Reach Standard Paraflyte Full Height

Requires tools for installation and removal.

Uses Paraflyte Anchor I.D. No. 22501

[Spec Sheet SP 10.53](#)



## Long Reach Standard Quickset Full Height

Requires no tools for installation or removal.

Uses Quickset Anchor I.D. No. 23301

[Spec Sheet SP 10.54](#)

The Florida standard model is designed to be set atop an elevated curb adjacent to the gutter. Such protective curbs are required by some states to keep out debris and runoff. The anchor setback ("B" dimension) is fixed at 18".

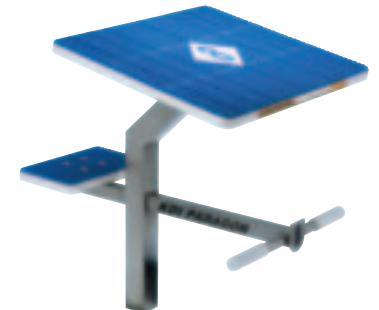


## Florida Standard Paraflyte Full Height

Requires tools for installation and removal.

Uses Paraflyte Anchor I.D. No. 22201

[Spec Sheet SP 10.55](#)



## Florida Standard Quickset Full Height

Requires no tools for installation or removal.

Uses Quickset Anchor I.D. No. 23301

[Spec Sheet SP 10.56](#)

*Note: All platforms are furnished with a tilted top unless otherwise specified.*



**WARNING:** Starting Platforms are to be used only by trained competitive swimmers. Only shallow racing dives should be executed. Impact with the pool bottom can cause serious injury. Please refer to applicable codes and regulations for your specific installation.



# Full Height

## Dual Leg (Competitor)

The Competitor platform (dual leg models) is our premier starting platform. This versatile design accommodates our standard tops (24" x 20") as well as our track start tops (32" x 24"). The competitor style platforms provide the ease of including our exciting graphics to your top. All Competitor anchor systems (patented) offer the feature of installing the platform without tools and come in two types of anchor assemblies, 6" Competitor (for anchor setbacks of under 30") or 10" Competitor (for anchor setbacks of over 30"). All starting platforms are provided with anchors unless otherwise specified. Platform top consists of a 1-1/4" thick UV inhibited polypropylene top with patent-pending, cross-grooved, non-skid, white sand finish. Colors and graphics are an option.



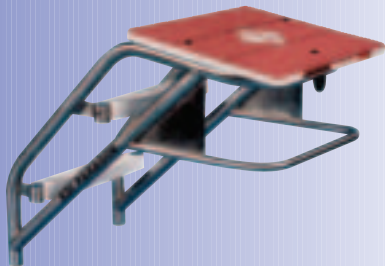
### Long Reach

#### Standard Competitor (B = 20"-29-1/2")

Designed to accommodate most pool profiles. The anchor setback ("B" dimension) range is 20" to 29-1/2". Uses 6" Competitor Anchor

I.D. No. 23103

[Spec Sheet SP 10.60.1](#)



### Long Reach

#### Standard Competitor (B = 30"-40")

For pools with wide overflow gutter systems. The anchor setback ("B" dimension) range is 30" to 40". Uses 10" Competitor Anchor

I.D. No. 23140

[Spec Sheet SP 10.60.2](#)

Our highly regarded Track Start Competitor Models (available in side step and rear mount) give swimmers an extra fast takeoff. The 32" x 24" top supports the "track-type" start now used by many competitive swimmers.



### Track Start Competitor Side Step Full Height

The anchor setback ("B" dimension) is available at 18" or 24". Uses 6" Competitor Anchor I.D. No. 23103

[B= 18", A < 24 1/2" – Spec Sheet SP 10.60.3](#)

[B= 18", A > 24" – Spec Sheet SP 10.60.4](#)

[B= 24", A = 17"-31" – Spec Sheet SP 10.60.5](#)

### Long Reach Track Start Competitor Rear Mount

The anchor setback ("B" dimension) is available from 36" to 40". Uses 10" Competitor Anchor I.D. No. 23140

[B= 36" - 40" – Spec Sheet SP 10.60.6](#)



### Classic Standard Competitor

This Dual Leg design utilizes the standard size top (24" x 20") and offers the opportunity to add graphics. The anchor setback ("B" dimension) is fixed at 18". Uses 6" Competitor Anchor

I.D. No. 23103

[Spec Sheet SP 10.59](#)

**Note:** All platforms are furnished with a tilted top unless otherwise specified.



**WARNING:** Starting Platforms are to be used only by trained competitive swimmers. Only shallow racing dives should be executed. Impact with the pool bottom can cause serious injury. Please refer to applicable codes and regulations for your specific installation.

# Low Height (Varsity)

Our varsity starting platform series was originally designed to accommodate the high school ruling of an allowable height above water in some venues of 18". This ruling has changed. However, the coaching community still utilizes this platform to render less than maximum height above water. All Low Height Varsity platforms include anchors with the exception of the Classic Standard and Long Reach Standard Paraflyte platforms. Platform top consists of a 1-1/4" thick UV inhibited 24"x 20" polypropylene top with patent-pending, cross-grooved, non-skid, white sand finish.

We recommend a mounting step be added when the "A" dimension is 15" or greater (at additional cost). Varsity models do not include a mounting step and must be specified at time of order.

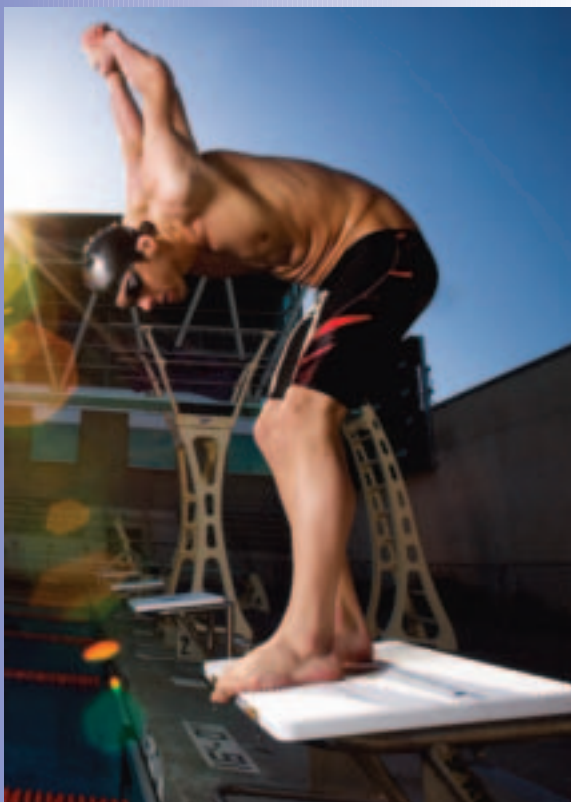


PHOTO COURTESY OF SPEEDO

The Classic Standard Model is designed to fit most pools.



### Varsity Classic Standard Paraflyte

The anchor setback ("B" dimension) is available at 14", 18", 21" or 26".

Uses Paraflyte Anchor  
(not included) I.D. No. 22201

**B = 21" or 26" – Spec Sheet SP 10.61**

**B = 14" or 18" – Spec Sheet SP 10.62**

Varsity Standard Platform Optional Step – I.D. No 23950



### Varsity Classic Standard Quickset

The anchor setback ("B" dimension) is available at 14", 18", 21" or 26".

Uses Quickset Anchor I.D. No. 23301

**Spec Sheet SP 10.63**

The Long Reach Standard is designed for deck level pools with wide overflow gutter systems.



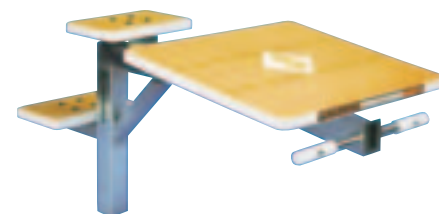
### Varsity Long Reach Standard Paraflyte

The anchor setback ("B" dimension) is fixed at 34 1/2". Uses Long Reach Paraflyte Anchor

(not included) I.D. No. 22501

**Spec Sheet SP 10.65**

Varsity Long Reach Platform Optional Step – I.D. No 23951



### Varsity Long Reach Standard Quickset

The anchor setback ("B" dimension) is fixed at 34 1/2". Uses Quickset Anchor

I.D. No. 23301

**Spec Sheet SP 10.67**

This dual leg design utilizes the standard size top and offers the opportunity to add graphics.



### Varsity Standard Competitor

The anchor setback ("B" dimension) is fixed at 18". Uses 6" Competitor Anchor

I.D. No. 23103

**Spec Sheet SP 10.69**

Varsity Competitor Platform Optional Step – I.D. No 24090

*Note: All platforms are furnished with a tilted top unless otherwise specified.*

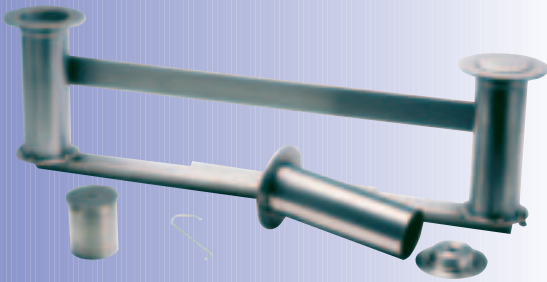


**WARNING:** Starting Platforms are to be used only by trained competitive swimmers. Only shallow racing dives should be executed. Impact with the pool bottom can cause serious injury. Please refer to applicable codes and regulations for your specific installation.

# Starting Platform Anchors

## Competitor Anchors (Patented)

All stainless steel with patented self-centering, taper lock base. Allows the platform to slip easily into the close-fitting sleeves while providing a secure setup. No tools required for installation or removal of the starting platform. Welded spacers are factory installed to ensure proper alignment with platforms.

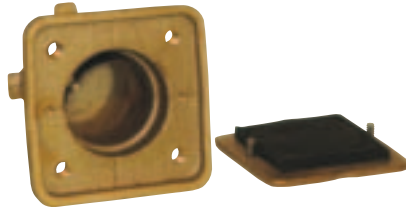


### 6" Competitor Anchor

This 6" deep anchor assembly is used on all Competitor starting platforms with an anchor setback ("B" dimension) of under 30".  
I.D. No. 23103

### 10" Competitor Anchor

This 10" deep anchor assembly is used on all Competitor starting platforms with an anchor setback ("B" dimension) of 30" to 40".  
I.D. No. 23140



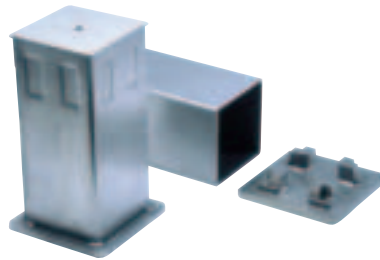
### Paraflyte Anchor

Ideal for situations where the platform does not need to be removed from the pool deck. Single-legged starting platform is bolted to the cast bronze anchor requiring tools for installation and removal of the platform.  
I.D. No. 22201



### Long Reach Paraflyte Anchor

Designed for the Long Reach Standard Paraflyte single-legged platform. Attaches to the heavy-duty stainless steel anchor with four bolts and requires the use of tools for installation and removal of the platform.  
I.D. No. 22501



### Quickset® Anchor (Patented)

Allows for removal and installation of the platform from the anchor socket without the use of tools to permit safe storage and to prevent unauthorized use of the platforms. This stainless steel anchor features a self-centering, taper-lock base that allows a single-legged platform to slip easily into the close-fitting sleeve while providing a secure setup.  
I.D. No. 23301

Quickset Anchors (pre-Taper-Lock style) can be easily upgraded with our retrofit taper-lock conversion kit.

I.D. No. 23301 INS



# Safety Covers

## Platform Safety Covers

Constructed of tough, light-weight plastic, covers prevent unauthorized use of platforms. Easy installation with bungee cord (included). Stack easily for storage. Comes in safety orange per ANSI standards.

## Platform Safety Labels

Be sure every starting platform is labeled to advise users of proper racing dive technique. Set of 2 labels for labeling back and side of platform top.  
I.D. No. 22621



Track Start Safety Cover  
fits 32" x 24" tops.  
I.D. No. 23967

Standard Platform Safety  
Cover fits 24" x 20" tops.  
I.D. No. 23960



All platforms now come with molded-in safety label which cannot peel or be removed.

# Customize your New Sandtop Starting Platforms

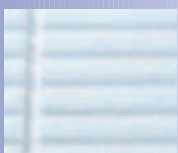
## Colors



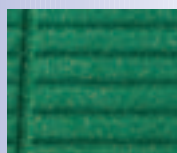
*Red*



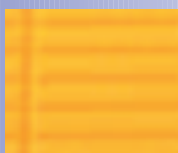
*Blue*



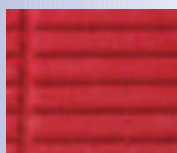
*White*



*Green*



*Yellow*



*Cranberry*



*Black*

Adding color is an option. We're able to match any color within a color-coding system such as the Pantone Color Matching System. Virtually all school colors are matchable.

### Color Upgrade

I.D. No. 23990C (for color upgrade per unit)

## Graphics

We have added this new and exciting feature. We are proud to present you with this custom item that will offer expanded design options (i.e., school or team logo). Paragon Aquatics is again leading the field with new and innovative products.



### Custom Logo Upgrade

I.D. No. 23991 (I.D. No. for logo upgrade only)

Renew your existing Paragon Starting Platform Tops (and steps) with the new **sand finish**.



Send us your old style Paragon white polypropylene tops and steps and take advantage of our refinishing program. You'll get the most recent groove patterns as well as the sand finish surface for a great value. Adding color is also an option for refinished platforms for an additional cost.

Paragon platforms are widely used on FINA, NCAA, NFHS, USAS, and USMS competition pools.

Please contact us or your authorized Paragon Aquatics distributor.

# Colorado Block<sup>®</sup> by Paragon

For competitive swimming venues, two companies have established their products as essential for accurate, problem-free racing. Paragon Aquatics and its unrivaled starting platforms; Colorado Time Systems and its relay judging platforms (RJP) and other components.

Now they're all combined in one outstanding product, the patented Colorado Block, the result of a collaboration between Colorado Time Systems and Paragon.

The RJP, mounts securely atop the Paragon platform with an exclusive system which does not require tools, providing the most accurate way by far to judge a swimmer's departure for starts and relay exchanges.

With the Colorado Block you can rely on accuracy to 1/100th of a second! The RJP portion of the block can decipher between weight shifts and actual starts.

The uniquely-engineered Colorado Block houses the connection plate, which protects the electronics from the harsh pool environment. Additionally, it enables the removal of the timing system without tools.

The Colorado Block is also a great training device. Swimmers can fine-tune their start reaction times and their relay exchanges.

As a leader in aquatics equipment, we've learned that sometimes two great companies are better than one.



(Shown with FINA Backstroke Bars atop a Track Start Competitor Side Step Model)

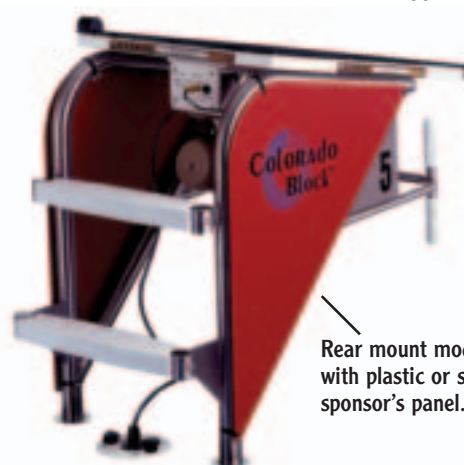
**Adapter Kit for Paragon Starting Platform** Sponsor's panel of stainless steel fits on platform's slide brackets to display sponsor info, school logo, etc. Also includes horn and deck plate mounting bracketry. Panel slides open for easy access to horn and deck plate. It is removable from the starting platform without tools.

Included: hardware, quick connectors, instructions, drill bit for retrofits and sponsor's panel slide brackets. These are factory installed on the starting platforms or can be easily retrofitted for field upgrades.

- Track Start Side Step I.D. No. 22670D
- Long Reach Track Start Rear Mount I.D. No. 22671D
- Standard Competitor I.D. No. 22672D
- Long Reach Competitor I.D. No. 22673D
- Standard Paraflyte/Quickset I.D. No. 22674D



*Sponsors panel with connection hub and horn*



(Shown atop a Track Start Competitor Rear Mount Model)

Rear mount models available with plastic or stainless steel sponsor's panel.



**WARNING:** Starting Platforms are to be used only by trained competitive swimmers. Only shallow racing dives should be executed. Impact with the pool bottom can cause serious injury. Please refer to applicable codes and regulations for your specific installation.

# How To Size Your Starting Platforms



PHOTO COURTESY OF SPEEDO

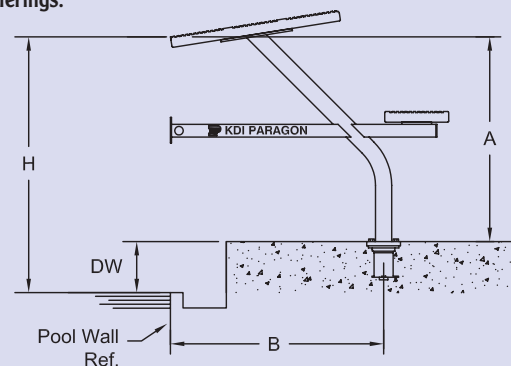
1. Review pages 5-11 to become familiar with the variety of models, options and anchor systems available.
2. Establish the maximum desired height above water using applicable rulings that govern competitive swimming. Information provided is the latest available at the time of printing. Please confirm that rules have not changed.

**IMPORTANT:** Please refer to your local, municipal, and state statutes, ordinances, and regulations, which may vary from locale to locale.

		Water Depth **		
Ruling Body	Course Length	Less Than 4'-0"	4'-0" to 4'-6"	Greater Than 4'-6"
FINA	Long/Short	NO PLATFORM		20" - 29 1/2"
NCAA	Long/Short	NO PLATFORM		30" MAX
USAS	Long	NO PLATFORM		20" - 29 1/2"
	Short	NO PLATFORM		30" MAX
USMS	Long	NO PLATFORM		20" - 29 1/2"
	Short	NO PLATFORM		30" MAX
NFHS	Long/Short	NO PLATFORM		30" MAX
		NO PLATFORM		

** Location of Water Depth Measurement from Pool Wall	
FINA	3'-3 1/2" (1 meter) to 19'-8 1/4" (6 meters)
NCAA	Minimum 4'-0" throughout pool recommended
USAS	3'-3 1/2" (1 meter) to 16'-5" (5 meters)
USMS	3'-3 1/2" (1 meter) to 16'-5" (5 meters)
NFHS	From pool wall (0 meters) to 16'-5" (5 meters)

3. Determine "B" Dimension:  
The dimension is always taken from the vertical pool wall to the center of the anchor socket.
4. Calculating The "A" Dimension:  
The "A" dimension is defined as the vertical dimension from the top of the anchor socket (flush with the pool deck slab) to the top, front edge of the starting platform top. The "A" dimension plus the deck to water dimension (DW) cannot exceed the maximum height above water (H) as determined by your ruling body. If your pool deck is sloped (for drainage), please account for the rise/drop in elevation of the deck in calculating the "DW" dimension.
5. For each given pool type, Paragon has general platform recommendations. These are provided for your convenience in selecting a platform. Select a platform with the appropriate "A" and "B" dimensions as determined above. The diagram references Paragon's standard platform style offerings.



\* Paraflyte platform shown for reference only.

**NOTE:** If you require a special configuration, please contact us or one of our authorized Paragon Aquatics distributors.



# Platform Selector Charts

Now that you have sized your platform use the charts to determine the product that will work best at your pool facility. If this selection does not meet your precise requirements, we will make something that does. Custom platforms are our specialty.



Selector Chart — Full Height Models (Up to 30" above water)												
Model	Classic			Long Reach		Florida		Competitor Classic Standard	Long Reach Competitor		Track Start Competitor	
	Page 6			Page 6		Page 6		Page 7	Page 7		Page 7	
	A Dim In.	B Dim In.*	Paraflyte	Quickset	Paraflyte	Quickset	Paraflyte	Quickset	Competitor Classic Standard	Long Reach Competitor	Track Start Competitor	Rear Mount
				B=34-1/2"		B=18"		B=18"	B=30"-40"	B=20"-29-1/2"	B=18", 24"	B=36"-40"
		I.D. Number		I.D. Number	I.D. Number	I.D. Number	I.D. Number	I.D. Number	I.D. Number	I.D. Number	I.D. Number	I.D. Number
31.0				22401	23401				24301	24401	24501	24601
30.5				22402	23402				24302	24402	24502	24602
30.0	26	22101	23201	22403	23403			23001	24303	24403	24503	24603
29.5	26	22102	23202	22404	23404			23002	24304	24404	24504	24604
29.0	26	22103	23203	22405	23405			23003	24305	24405	24505	24605
28.5	26	22104	23204	22406	23406			23004	24306	24406	24506	24606
28.0	26	22105	23205	22407	23407	22901	23531	23005	24307	24407	24507	24607
27.5	26	22106	23206			22902	23532	23006	24308	24408	24508	24608
27.0	26	22107	23207			22903	23533	23007	24309	24409	24509	24609
26.5	26	22108	23208			22904	23534	23008	24310	24410	24510	24610
26.0	26	22109	23209			22905	23535	23009	24311	24411	24511	24611
25.5	26	22110	23210			22906	23536	23010	24312	24412	24512	24612
25.0	26	22111	23211			22907	23537	23011	24313	24413	24513	24613
24.5	25	22112	23212			22908	23538	23012	24314	24414	24514	24614
24.0	25	22113	23213			22909	23539	23013	24315	24415	24515	24615
23.5	24	22114	23214					23014	24316	24416	24516	24616
23.0	24	22115	23215					23015	24317	24417	24517	24617
22.5	23	22116	23216					23016	24318	24418	24518	24618
22.0	23	22117	23217					23017	24319	24419	24519	24619
21.5	23	22118	23218					23018	24320	24420	24520	24620
21.0	23	22119	23219					23019	24321	24421	24521	24621
20.5	23	22120	23220					23020		24422	24522	
20.0	23	22121	23221					23021		24423	24523	
19.5	22	22122	23222					23022		24424	24524	
19.0	22	22123	23223					23023		24425	24525	
18.5	22	22124	23224					23024		24426	24526	
18.0	21	22125	23225					23025		24427	24527	
17.5	21	22126	23226					23026		24428	24528	
17.0	21	22127	23227					23027		24429	24529	

\* 'B' dimensions refer to Classic models only. 'B' dimensions vary on other models as indicated.

Selector Chart — Low Height Models (Up to 18" above water)										
VARSITY LINE										SHORTEE
Model	Classic				Long Reach		Competitor	(Full Height)		
	Page 8				Page 8		Page 8	Page 6		
	Paraflyte		Quickset		Paraflyte	Quickset	Varsity Standard	Paraflyte	Quickset	
A Dim In.	B Dim's In.		B Dim's In.		B=34-1/2"	B=34-1/2"	B=18"	B=18"	B=18"	
	I.D. Number		I.D. Number		I.D. Number	I.D. Number	I.D. Number	I.D. Number		
19.0					23901	23921				
18.5					23902	23922				
18.0	21 or 26	23601	14, 18, 21 or 26	23801	23903	23923	24001	22920	23560	
17.5	21 or 26	23602	14, 18, 21 or 26	23802	23904	23924	24002	22921	23561	
17.0	21 or 26	23603	14, 18, 21 or 26	23803	23905	23925	24003	22922	23562	
16.5	21 or 26	23604	14, 18, 21 or 26	23804	23906	23926	24004	22923	23563	
16.0	21 or 26	23605	14, 18, 21 or 26	23805	23907	23927	24005	22924	23564	
15.5	21 or 26	23606	14, 18, 21 or 26	23806			24006	22925	23565	
15.0	21 or 26	23607	14, 18, 21 or 26	23807			24007	22926	23566	
14.5	21 or 26	23608	14, 18, 21 or 26	23808			24008	22927	23567	
14.0	21 or 26	23609	14, 18, 21 or 26	23809			24009	22928	23568	
13.5	21 or 26	23610	14, 18, 21 or 26	23810			24010	22929	23569	
13.0	21 or 26	23611	14, 18, 21 or 26	23811			24011	22930	23570	
12.5	21 or 26	23612	14, 18, 21 or 26	23812			24012	22931	23571	
12.0	21 or 26	23613	14, 18, 21 or 26	23813			24013	22932	23572	
11.5	14 or 18	23614	14, 18, 21 or 26	23814			24014			
11.0	14 or 18	23615	14, 18, 21 or 26	23815			24015			
10.5	14 or 18	23616	14, 18, 21 or 26	23816			24016			
10.0	14 or 18	23617	14, 18, 21 or 26	23817			24017			
9.5	14 or 18	23618	14, 18, 21 or 26	23818			24018			
9.0	14 or 18	23619	14, 18, 21 or 26	23819			24019			
8.5	14 or 18	23620	14, 18, 21 or 26	23820			24020			
8.0	14 or 18	23621	14, 18, 21 or 26	23821			24021			

\*Note: Anchors not included with Classic Standard Varsity or Varsity Long Reach Standard Paraflyte models.