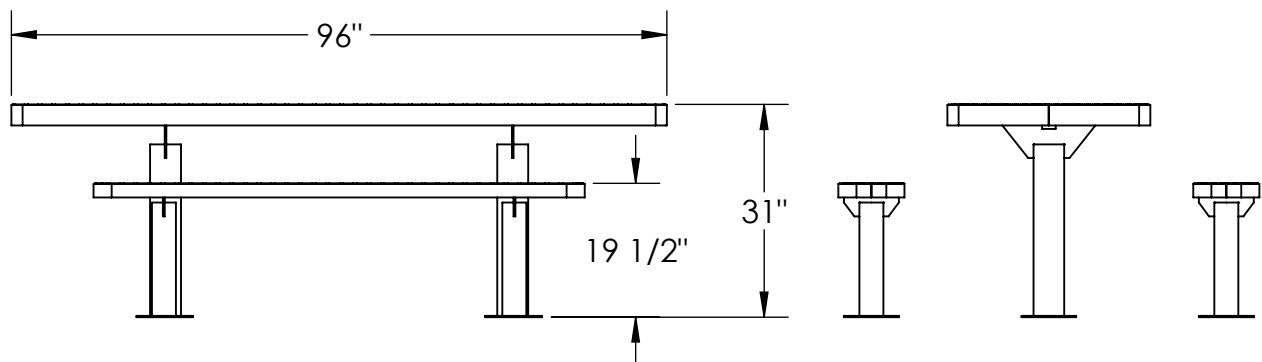
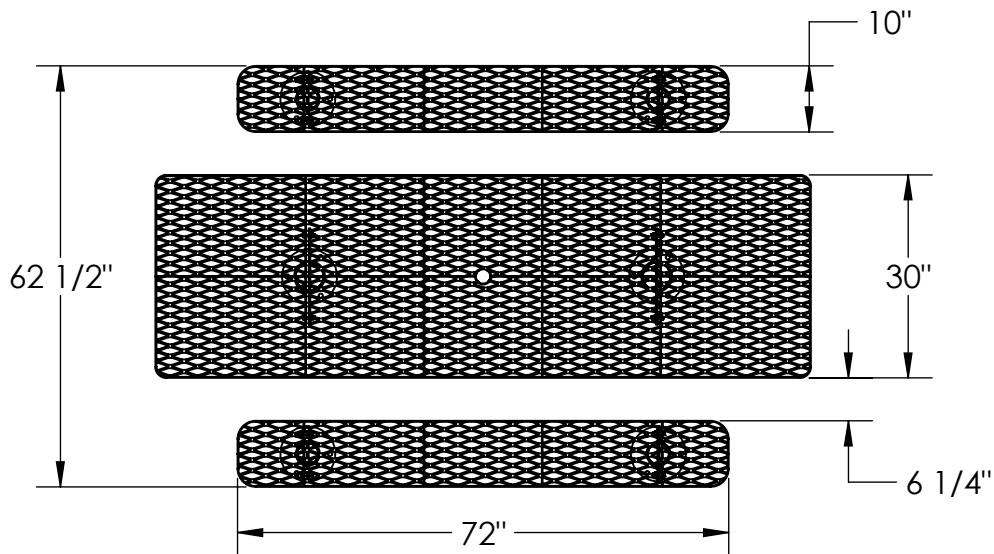


8' Accessible Multi-Pedestal Surface Mount

950-505



1. Drill plastic out of the mounting holes on the pedestals, top and seats using a 7/16" dia. drill bit.
2. Fasten the table top and seats to the pedestals, installing the pedestal on the inside of the table and seat mounting bar.
3. Position the table and seats and anchor them to the floor.

In Accordance to California law: WARNING This product contains a chemical known to the State of California to cause cancer and birth defects or other reproductive harm.



PREMIER POLYSTEEL

The Best Commercial Outdoor Furniture Available. Period.

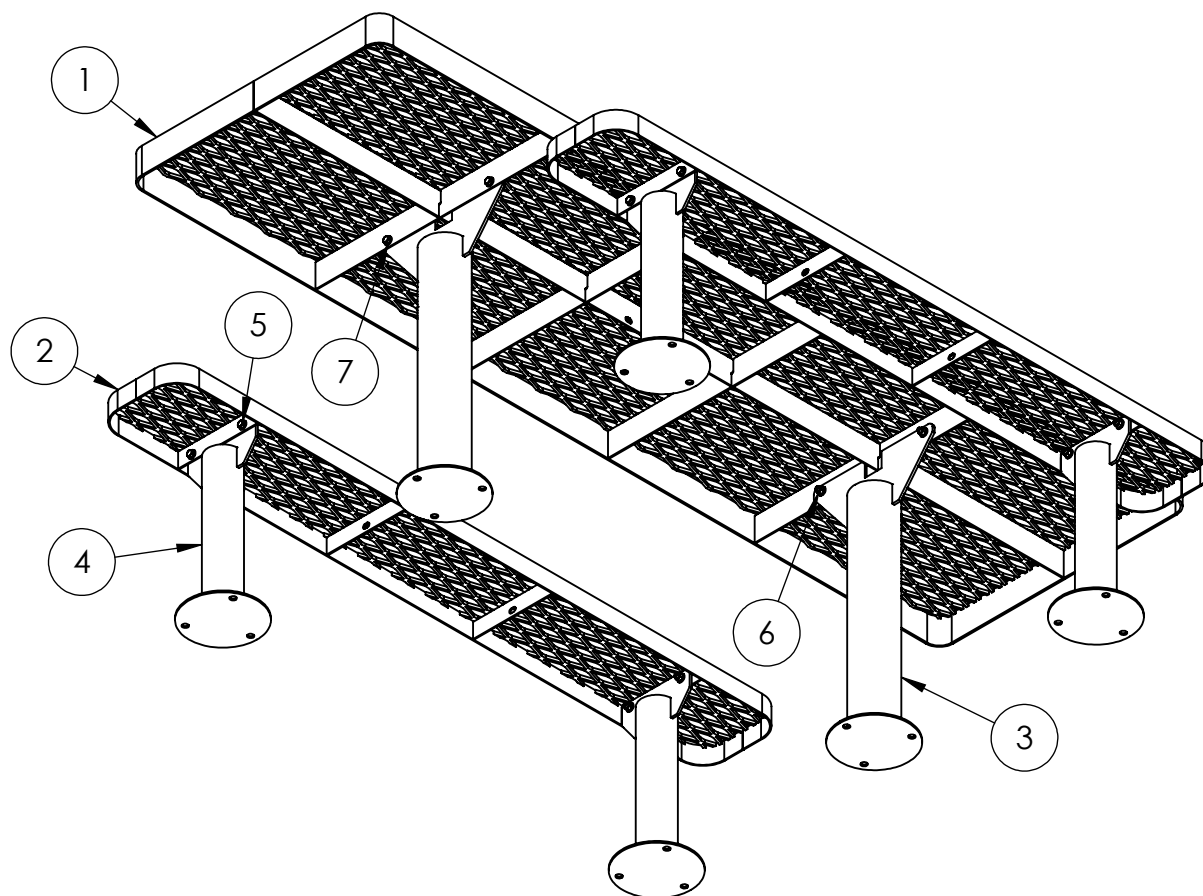


SIZE
A

REV. X.01 | SHEET 1 OF 2

8' Accessible Multi-Pedestal Surface Mount

950-505



ITEM NO.	PART NUMBER	DESCRIPTION	QTY.
1	642-A15	8' Accessible Table Top Expanded	1
2	622-013	Champion Seat/Back 6'	2
3	633-131	Table Pedestal Stand (Surface Mount)	2
4	633-141	Seat Pedestal Stand (Surface Mount)	4
5	516-058	3/8"x1-1/2" SS Hex Bolt	12
6	516-028	3/8" SS Nylock Nut	12
7	516-023	3/8" SS Flat Washer	24



PREMIER POLYSTEEL

The Best Commercial Outdoor Furniture Available. Period.



SIZE
A

REV. X.01 | SHEET 2 OF 2