

1. Drill plastic out of the mounting holes on the stands, seat/back and brace using a 7/16" dia. drill bit.
2. Fasten the seat/back to the stands loosely and then fasten the brace to the stands. The stands mount on the inside of the cross bar of the seat/back.
3. Set on a level surface and tighten all of the bolts.

In Accordance to California law: WARNING This product contains a chemical know to the State of California to cause cancer and birth defects or other reproductive harm.

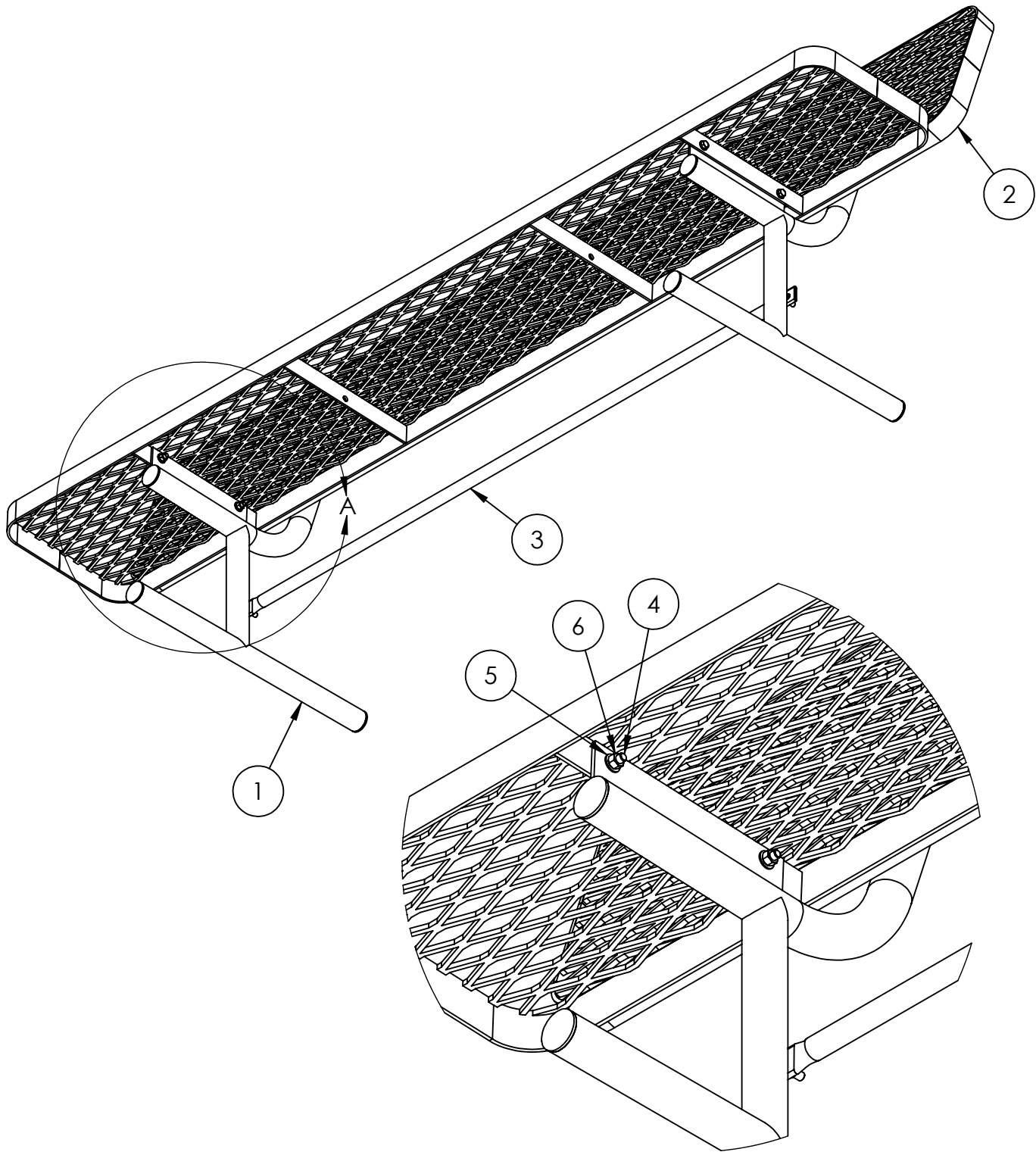
ITEM NO.	PART NUMBER	DESCRIPTION	QTY.
1	630-110	Bench with back stand FS	2
2	622-115	Champion Supreme Seat/Back	2
3	630-017	8' Bench with Back Brace	1
4	516-058	3/8"x1-1/2" SS Hex Bolt	8
5	516-023	3/8" SS Flat Washer	18
6	516-028	3/8" SS Nylock Nut	10



PREMIER POLYSTEEL

The Best Commercial Outdoor Furniture Available. Period.





DETAIL A
SCALE 1 : 6



PREMIER POLYSTEEL

The Best Commercial Outdoor Furniture Available. Period.

